

**HB series**

- 379 EPIC® HB 6**  
Hoods, bases & couplers with single lever & bolts
- 382 EPIC® HB 10 with single lever**  
Hoods, bases & couplers with single lever & bolts
- 385 EPIC® HB 10 with double levers**  
Hoods, bases & couplers with double levers & bolts
- 388 EPIC® HB 16 with single lever**  
Hoods, bases & couplers with single lever & bolts
- 391 EPIC® HB 16 with double levers**  
Hoods, bases & couplers with double levers & bolts
- 394 EPIC® HB 24 with single lever**  
Hoods, bases & couplers with single lever & bolts
- 397 EPIC® HB 24 with double levers**  
Hoods, bases & couplers with double levers & bolts
- 400 EPIC® HB 32**  
Hoods, bases & couplers with double levers & bolts
- 402 EPIC® HB 48**  
Hoods & bases with single lever & bolts

**ULTRA series**

- 405 EPIC® ULTRA HA 3**  
Hoods, bases & couplers with single lever & bolts
- 407 EPIC® ULTRA HB 6**  
Hoods & bases with single lever & bolts
- 409 EPIC® ULTRA HB 10**  
Hoods & bases with double levers & bolts
- 410 EPIC® ULTRA HB 16**  
Hoods & bases with double levers & bolts
- 411 EPIC® ULTRA HB 24**  
Hoods & bases with double levers & bolts

**HA series**

- 413 EPIC® HA 3/4**  
Hoods, bases & couplers with single lever & bolts
- 415 EPIC® HA 10**  
Hoods, bases & couplers with single lever & bolts
- 417 EPIC® HA 16**  
Hoods, bases & couplers with single lever & bolts
- 419 EPIC® HA 32**  
Hoods, bases & couplers with double levers & bolts
- 421 EPIC® HA 48**  
Hoods & bases with double levers & bolts
- 422 EPIC® HA 64**  
Hoods & bases with single lever & bolts

## EPIC® HB series







EPIC® HB rectangular connectors comply with all applicable requirements of Underwriters Laboratory (UL) Standards 1977 and 498, VDE Standard 0110 for creepage and clearance distances, and VDE Standard 0627 for the connector design.

The recognized UL file number and Canadian Standards Association (CSA) for EPIC® connectors are UL #E75770 and CSA #LR53004-1.

EPIC® connectors meet UL 50 E Type 4 & 12, and provide IP65 protection only when in the mated condition.

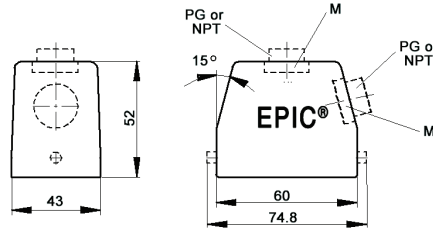
HB housing	EPIC® insert series									
	HBE	HEE	HBS	Power HS	HBVE	HD	HDD	MH	MC	Power K
<b>HB 6</b>	HBE 6	HEE 10	—	HS 4	—	—	HDD 24	MH 6	MC 2	—
<b>HB 10</b>	HBE 10	HEE 18	—	—	HBVE 3	—	HDD 42	MH 10	MC 3	—
<b>HB 16</b>	HBE 16	HEE 32	HBS 6	—	HBVE 6	HD 40	HDD 72	MH 16	MC 5	4+0, 4+2
<b>HB 24</b>	HBE 24	HEE 46	—	—	HBVE 10	HD 64	HDD 108	MH 24	MC 7	4+8
<b>HB 32</b>	HBE 32	HEE 64	HBS 12	—	—	HD 80	HDD 144	—	MC 10	—
<b>HB 48</b>	HBE 48	HEE 92	—	—	—	HD 128	HDD 216	—	MC 14	—

### Technical data

 <b>Specifications:</b>	DIN 43652	 <b>Temperature range:</b>	-40°C to +100°C - short-term: up to +125°C
 <b>IP Protection class:</b>	see individual product page	 <b>Material:</b>	- body: powder-coated aluminum alloy - levers & bolts: zinc-plated steel - seal: NBR

## EPIC® HB 6 standard hood

Single-entry hood with single lever bolts



all dimensions are in mm

**Technical data**

**IP Protection class:** UL 50E Type 4, 12 IP65

**Complete the installation**

HB dust covers page <?>

**Approvals**

UL US RoHS VDE

**PG**

PG hood		SKINTOP® gland	
size	part number	plastic	metal
<b>Top entry</b>			
PG 13	10011000	53015030	52015700
PG 16	10021000	53015040	52015740
<b>Side entry</b>			
PG 13	10012000	53015030	52015740
PG 16	10022000	53015040	52015740

**NPT**

NPT hood		SKINTOP® gland	
size	part number	plastic	metal
<b>Top entry</b>			
1/2"	100110NP	S1112	53112024
1/2"	100210NP*	S1112	53112024
<b>Side entry</b>			
1/2"	100120NP	S1112	53112024
1/2"	100220NP*	S1112	53112024

NPT hood provided with NPT fitting

\* Internal entry is wider for ease of assembly

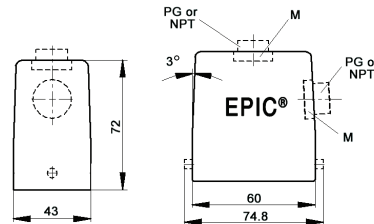
**metric**

Metric hood		SKINTOP® gland	
size	part number	plastic	metal
<b>Top entry</b>			
M20	19011000	53111020	53112020
M25	19021000	53111030	53112030
<b>Side entry</b>			
M20	19012000	53111030	53112030
M25	19022000	53111030	53112030

\* Metric top-entry hoods do not come with a neck

## EPIC® HB 6 high profile hood

Single-entry hood with single lever bolts



all dimensions are in mm

**Technical data**

**IP Protection class:** UL 50E Type 4, 12 IP65

**Complete the installation**

HB dust covers page <?>

**Approvals**

UL US RoHS VDE

**PG**

PG hood		SKINTOP® gland	
size	part number	plastic	metal
<b>Top entry</b>			
PG 21	70020200	53015050	52015750
PG 29	70020400	53015060	52015760
<b>Side entry</b>			
PG 21	70022200	53015050	52015750
PG 29	70022400	53015060	52015760

**NPT**

NPT hood		SKINTOP® gland	
size	part number	plastic	metal
<b>Top entry</b>			
3/4"	700202NP	S1134	53112034
1"	700204NP	S1101	53112044
<b>Side entry</b>			
3/4"	700222NP	S1134	53112034
1"	700224NP	S1101	53112044

NPT hood provided with NPT fitting

**metric**

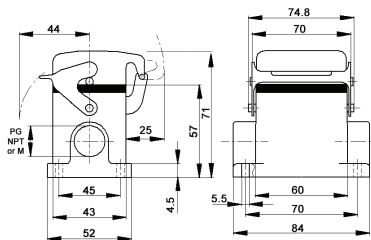
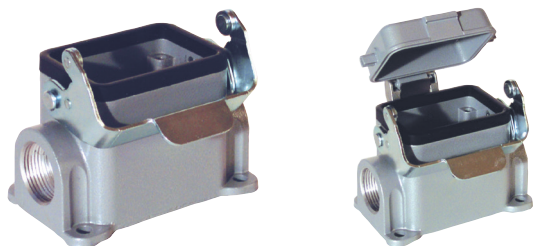
Metric hood		SKINTOP® gland	
size	part number	plastic	metal
<b>Top entry</b>			
M25	79020200	53111030	53112030
M32	79020400	53111040	53112040
<b>Side entry</b>			
M25	79022200	53111030	53112030
M32	79022400	53111040	53112040

\* Metric hoods do not come with a neck

Recommended SKINTOP® assumes minimal OD variance. Additional configurations are available; please see our SKINTOP® section. If not otherwise specified, all values relating to the product are nominal values. Photographs are not to scale and are not true representations of the products in question.

# EPIC® HB 6 standard surface mount base

## Surface mount base with single lever




all dimensions are in mm

### Technical data

**IP Protection class:** UL 50E Type 4, 12  
IP65

### Complete the installation

 HB dust covers  
page <?>

### Approvals



### PG

PG base		Dust cover	SKINTOP® gland	
size	part number		plastic	metal
<b>One entry</b>				
16	100050	no	53015040	52015740
16	100070	yes	53015040	52015740
<b>Two entries</b>				
16	100060	no	53015040	52015740
16	100090	yes	53015040	52015740

PG base provided with EPIC® SM/SP gland

### NPT

NPT base		Dust cover	SKINTOP® gland	
size	part number		plastic	metal
<b>One entry</b>				
½"	100050NP	no	S 1112	53112024
½"	100070NP	yes	S 1112	53112024
<b>Two entries</b>				
½"	100060NP	no	S 1112	53112024
½"	100090NP	yes	S 1112	53112024

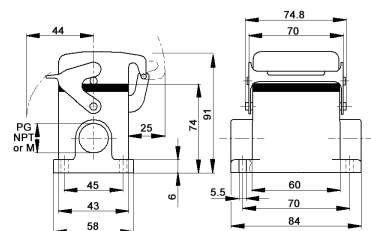
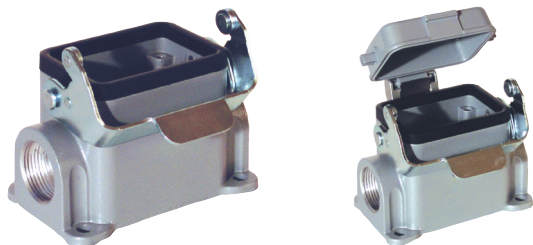
NPT base provided with NPT fitting

### metric

Metric base		Dust cover	SKINTOP® gland	
size	part number		plastic	metal
<b>One entry</b>				
20	19005000	no	53111020	53112020
20	19007000	yes	53111020	53112020
25	79005600	no	53111030	53112030
25	79015600	yes	53111030	53112030
<b>Two entries</b>				
20	19006000	no	53111020	53112020
20	19009000	yes	53111020	53112020
25	79006600	no	53111030	53112030
25	79016600	yes	53111030	53112030

# EPIC® HB 6 high profile surface mount base

## Surface mount base with single lever




all dimensions are in mm

### Technical data

**IP Protection class:** UL 50E Type 4, 12  
IP65

### Complete the installation

 HB dust covers  
page <?>

### Approvals



### PG

PG base		Dust cover	SKINTOP® gland	
size	part number		plastic	metal
<b>One entry</b>				
21	700052	no	53015050	52015750
21	700152	yes	53015050	52015750
29	700054	no	53015060	52015760
<b>Two entries</b>				
21	700062	no	53015050	52015750
21	700162	yes	53015050	52015750

### NPT

NPT base		Dust cover	SKINTOP® gland	
size	part number		plastic	metal
<b>One entry</b>				
¾"	700052NP	no	S 1134	53112034
¾"	700152NP	yes	S 1134	53112034
1"	700054NP	no	S 1101	53112044
<b>Two entries</b>				
¾"	700062NP	no	S 1134	53112034
¾"	700162NP	yes	S 1134	53112034

NPT base provided with NPT fitting

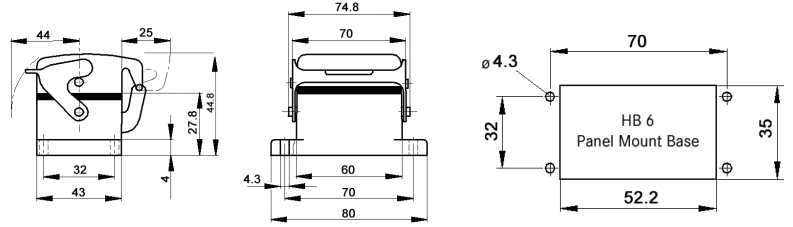
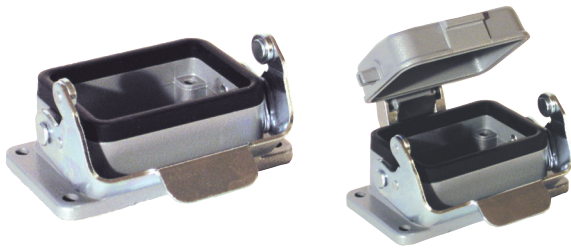
### metric

Metric base		Dust cover	SKINTOP® gland	
size	part number		plastic	metal
<b>One entry</b>				
25	79005200	no	53111030	53112030
25	79015200	yes	53111030	53112030
32	79005400	no	53111040	53112040
32	79015400	yes	53111040	53112040
<b>Two entries</b>				
25	79006200	no	53111030	53112030
25	79016200	yes	53111030	53112030
29	79006400	no	53111040	53112040
29	79015400	yes	53111040	53112040

Recommended SKINTOP® assumes minimal OD variance. Additional configurations are available; please see our SKINTOP® section.  
If not otherwise specified, all values relating to the product are nominal values.  
Photographs are not to scale and are not true representations of the products in question.

## EPIC® HB 6 panel mount base

Panel mount base with single lever



all dimensions are in mm

### Technical data

**IP Protection class:** UL 50E Type 4, 12  
IP65

### Complete the installation



HB dust covers  
page <?>

### Approvals



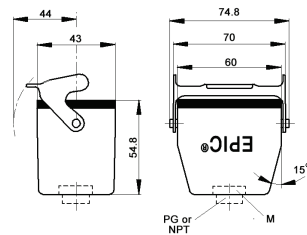
Dust cover included	Part number
no	100030C0
yes	100040C0

## EPIC® HB 6 cable coupler hood

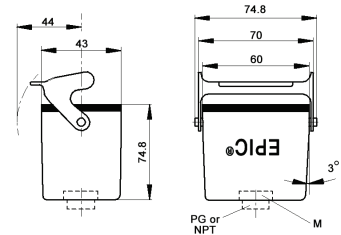
Cable coupler with single lever



### standard profile



### high profile



all dimensions are in mm

### Technical data

**IP Protection class:** UL 50E Type 4, 12  
IP65

### Complete the installation



HB dust covers  
page <?>

### Approvals



### PG

PG coupler size	part number	SKINTOP® gland	
		plastic	metal
<b>Standard profile</b>			
PG 13	100140	53015030	52015700
PG 16	100240	53015040	52015740
<b>High profile</b>			
PG 21	700102	53015050	52015750
PG 29	700104	53015060	52015760

### NPT

NPT coupler size	part number	SKINTOP® gland	
		plastic	metal
<b>Standard profile</b>			
1/2"	100140NP	S 1112	53112024
1/2"	100240NP*	S 1112	53112024
<b>High profile</b>			
3/4"	700102NP	S 1134	53112034
1"	700104NP	S 1101	53112044

### metric

Metric coupler* size	part number	SKINTOP® gland	
		plastic	metal
<b>Standard profile</b>			
M20	19014000	53111020	53112020
M25	19024000	53111030	53112030
<b>High profile</b>			
M25	79010200	53111030	53112020

\* Metric couplers do not come with a neck

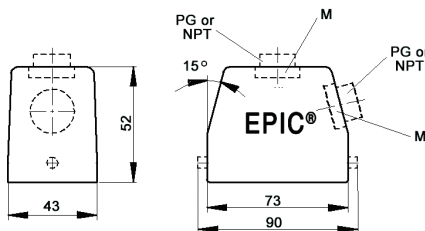
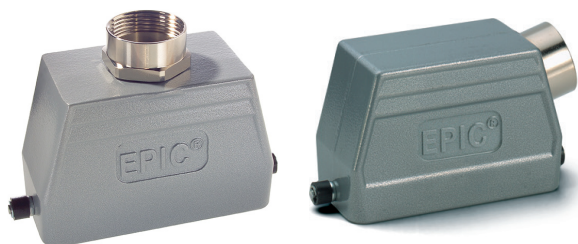
NPT coupler provided with NPT fitting

\* Internal entry is wider for ease of assembly

Recommended SKINTOP® assumes minimal OD variance. Additional configurations are available; please see our SKINTOP® section. If not otherwise specified, all values relating to the product are nominal values. Photographs are not to scale and are not true representations of the products in question.

## EPIC® HB 10 standard hood

Single-entry hood with single lever bolts




all dimensions are in mm

### Technical data

**IP Protection class:** UL 50E Type 12  
NEMA 4  
IP65

### Complete the installation

 HB dust covers  
page <?>

### Approvals



### PG

PG hood		SKINTOP® gland	
size	part number	plastic	metal
<b>Top entry</b>			
PG 16	10040900	53015040	52015740
PG 21	10040700	53015050	52015750
<b>Side entry</b>			
PG 16	10042900	53015040	52015740
PG 21	10042800	53015050	52015750

### NPT

NPT hood		SKINTOP® gland	
size	part number	plastic	metal
<b>Top entry</b>			
½"	100409NP	S 1112	53112024
¾"	100407NP	S 1134	53112034
<b>Side entry</b>			
½"	100429NP	S 1112	53112024
¾"	100428NP	S 1134	53112034

NPT hood provided with NPT fitting

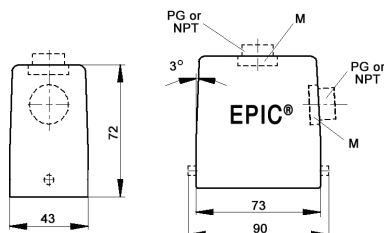
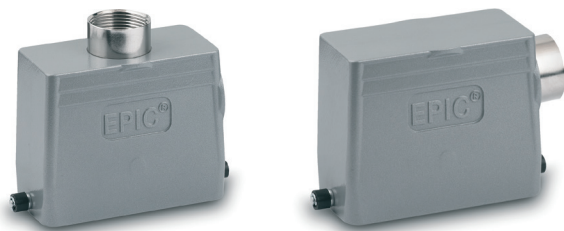
### metric

Metric hood		SKINTOP® gland	
size	part number	plastic	metal
<b>Top entry*</b>			
M20	19040900	53111020	53112020
M25	19040700	53111030	53112030
<b>Side entry</b>			
M20	19042900	53111030	53112030
M25	19042800	53111030	53112030

\* Metric top-entry hoods do not come with a neck

## EPIC® HB 10 high profile hood

Single-entry hood with single lever bolts




all dimensions are in mm

### Technical data

**IP Protection class:** UL 50E Type 12  
NEMA 4  
IP65

### Complete the installation

 HB dust covers  
page <?>

### Approvals



### PG

PG hood		SKINTOP® gland	
size	part number	plastic	metal
<b>Top entry</b>			
PG 21	70044200	53015050	52015750
PG 29	70044400	53015060	52015760
<b>Side entry</b>			
PG 21	70054200	53015050	52015750
PG 29	70054400	53015060	52015760

### NPT

NPT hood		SKINTOP® gland	
size	part number	plastic	metal
<b>Top entry</b>			
¾"	700442NP	S 1134	53112034
1"	700444NP	S 1101	53112044
<b>Side entry</b>			
¾"	700542NP	S 1134	53112034
1"	700544NP	S 1101	53112044

NPT hood provided with NPT fitting

### metric

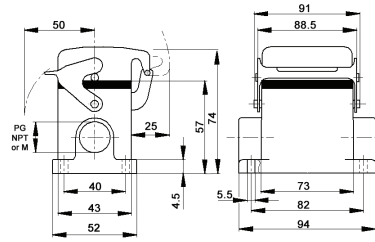
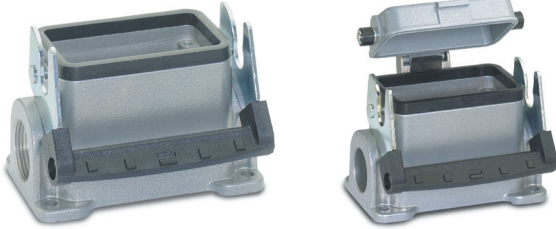
Metric hood		SKINTOP® gland	
size	part number	plastic	metal
<b>Top entry*</b>			
M25	79044200	53111030	53112030
M32	79044400	53111040	53112040
<b>Side entry</b>			
M25	79054200	53111030	53112030
M32	79054400	53111040	53112040

\* Metric hoods do not come with a neck

Recommended SKINTOP® assumes minimal OD variance. Additional configurations are available; please see our SKINTOP® section.  
If not otherwise specified, all values relating to the product are nominal values.  
Photographs are not to scale and are not true representations of the products in question.

## EPIC® HB 10 standard surface mount base

Surface mount base with single lever



all dimensions are in mm

### Technical data

**IP Protection class:** UL 50E Type 12  
NEMA 4  
IP65

### Complete the installation



HB dust covers  
page <?>

### Approvals



### PG

size	PG base		Dust cover	SKINTOP® gland	
	part number			plastic	metal
<b>One entry</b>					
16	100349		no	53015040	52015740
16	100369		yes	53015040	52015740
21	100347		no	53015050	52015750
<b>Two entries</b>					
16	100359		no	53015040	52015740
16	100389		yes	53015040	52015740

### NPT

size	NPT base		Dust cover	SKINTOP® gland	
	part number			plastic	metal
<b>One entry</b>					
½"	100349NP		no	S 1112	53112024
½"	100369NP		yes	S 1112	53112024
¾"	100347NP		no	S 1134	53112034
<b>Two entries</b>					
½"	100359NP		no	S 1112	53112024
½"	100389NP		yes	S 1112	53112024

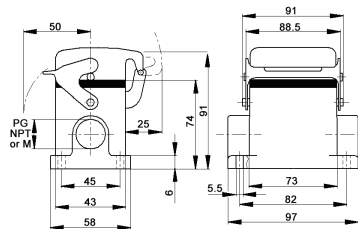
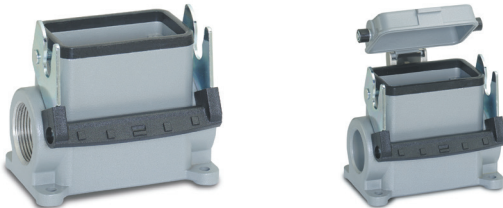
NPT base provided with NPT fitting

### metric

size	Metric base		Dust cover	SKINTOP® gland	
	part number			plastic	metal
<b>One entry</b>					
20	19034900		no	53111020	53112020
20	19036900		yes	53111020	53112020
25	19034700		no	53111030	53112030
25	79064600		yes	53111030	53112030
<b>Two entries</b>					
20	19035900		no	53111020	53112020
20	19038900		yes	53111020	53112020
25	79061600		no	53111030	53112030

## EPIC® HB 10 high profile surface mount base

Surface mount base with single lever



all dimensions are in mm

### Technical data

**IP Protection class:** UL 50E Type 12  
NEMA 4  
IP65

### Complete the installation



HB dust covers  
page <?>

### Approvals



### PG

size	PG base		Dust cover	SKINTOP® gland	
	part number			plastic	metal
<b>One entry</b>					
21	700602		no	53015050	52015750
21	700642		yes	53015050	52015750
29	700604R		no	53015060	52015760
29	700644		yes	53015050	52015750
<b>Two entries</b>					
21	700612		no	53015050	52015750
21	700652		yes	53015050	52015750
29	700614		no	53015060	52015760
29	700654		yes	53015060	52015760

### NPT

size	NPT base		Dust cover	SKINTOP® gland	
	part number			plastic	metal
<b>One entry</b>					
¾"	700602NP		no	S 1134	53112034
¾"	700642NP		yes	S 1134	53112034
1"	700604NP		no	S 1101	53112044
1"	700644NP		yes	S 1101	53112044
<b>Two entries</b>					
¾"	700612NP		no	S 1134	53112034
¾"	700652NP		yes	S 1134	53112034
1"	700614NP		no	S 1101	53112044
1"	700654NP		yes	S 1101	53112044

NPT base provided with NPT fitting

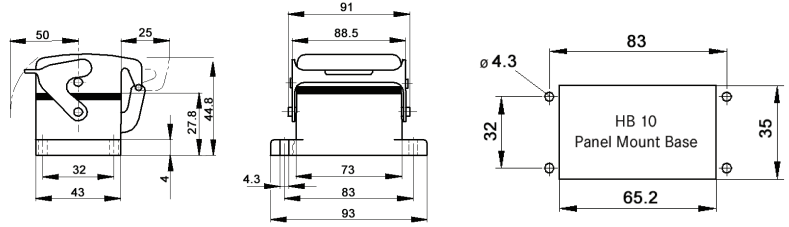
### metric

size	Metric base		Dust cover	SKINTOP® gland	
	part number			plastic	metal
<b>One entry</b>					
25	79060200		no	53111030	53112030
25	79064200		yes	53111030	53112030
32	79060400		no	53111040	53112040
32	79064400		yes	53111040	53112040
<b>Two entries</b>					
25	79061200		no	53111030	53112030
25	79065200		yes	53111030	53112030
32	79061400		no	53111030	53112030
32	79065400		yes	53111030	53112030

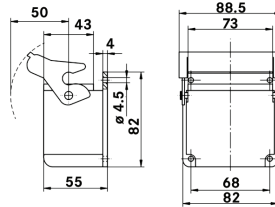
Photographs are not to scale and are not true representations of the products in question. Recommended SKINTOP® assumes minimal OD variance. Additional configurations are available; please see our SKINTOP® section. If not otherwise specified, all values relating to the product are nominal values.

# EPIC® HB 10 panel mount base

Panel mount base with single lever



all dimensions are in mm



right angle panel mount base

### Technical data

**IP Protection class:** UL 50E Type 12  
NEMA 4  
IP65

### Complete the installation



HB dust covers  
page <?>

### Approvals



Description	Dust cover included	Part number
standard	no	10032900
standard	yes	10033900

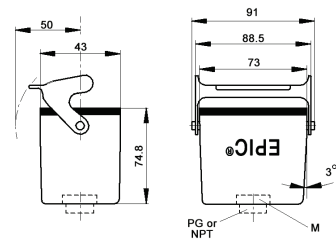
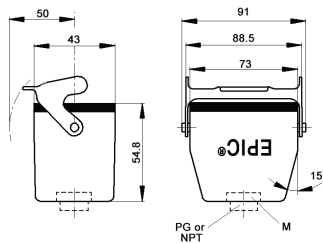
# EPIC® HB 10 cable coupler hood

Cable coupler with single lever



standard profile

high profile



all dimensions are in mm

### Technical data

**IP Protection class:** UL 50E Type 12  
NEMA 4  
IP65

### Complete the installation



HB dust covers  
page <?>

### Approvals



### PG

PG coupler size	part number	SKINTOP® gland	
		plastic	metal
<b>Standard profile</b>			
PG 16	100469	53015040	52015740
PG 21	700422	53015050	52015750
<b>High profile</b>			
PG 21	700424	53015050	52015750
PG 29	700426	53015060	52015760

### NPT

NPT coupler size	part number	SKINTOP® gland	
		plastic	metal
<b>Standard profile</b>			
1/2"	100469NP	S 1112	53112024
3/4"	700422NP	S 1134	53112034
<b>High profile</b>			
3/4"	700424NP	S 1134	53112034
1"	700426NP	S 1101	53112044

NPT coupler provided with NPT fitting

### metric

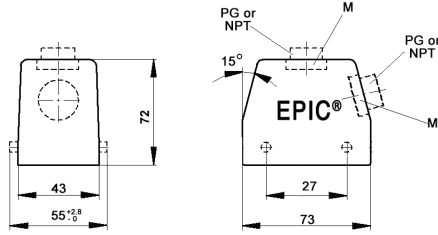
Metric coupler* size	part number	SKINTOP® gland	
		plastic	metal
<b>Standard profile</b>			
M20	19046900	53111020	53112030
M25	79042200	53111030	53112030
<b>High profile</b>			
M25	79042400	53111030	53112030
M32	79042600	53111040	53112040

\* Metric couplers do not come with a neck

Recommended SKINTOP® assumes minimal OD variance. Additional configurations are available; please see our SKINTOP® section.  
If not otherwise specified, all values relating to the product are nominal values.  
Photographs are not to scale and are not true representations of the products in question.

## EPIC® HB 10 standard hood

Single-entry hood with double lever bolts



all dimensions are in mm

### Technical data

**IP Protection class:** UL 50E Type 4, 12  
IP65

### Complete the installation



HB dust covers  
page <?>

### Approvals



### PG

PG hood		SKINTOP® gland	
size	part number	plastic	metal
<b>Top entry</b>			
PG 16	10040000	53015040	52015740
PG 21	10040100	53015050	52015750
<b>Side entry</b>			
PG 16	10042000	53015040	52015740
PG 21	10042100	53015050	52015750

### NPT

NPT hood		SKINTOP® gland	
size	part number	plastic	metal
<b>Top entry</b>			
1/2"	_____	S1112	53112024
3/4"	100401NP	S1134	53112034
<b>Side entry</b>			
1/2"	100420NP	S1112	53112024
3/4"	100421NP	S1134	53112034

NPT hood provided with NPT fitting

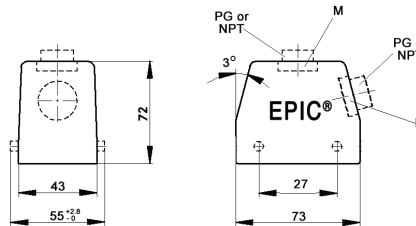
### metric

Metric hood		SKINTOP® gland	
size	part number	plastic	metal
<b>Top entry*</b>			
M20	19040000	53111020	53112020
M25	19040100	53111030	53112030
<b>Side entry</b>			
M20	19042000	53111030	53112030
M25	19042100	53111030	53112030

\* Metric top-entry hoods do not come with a neck

## EPIC® HB 10 high profile hood

Single-entry hood with double lever bolts



all dimensions are in mm

### Technical data

**IP Protection class:** UL 50E Type 4, 12  
IP65

### Complete the installation



HB dust covers  
page <?>

### Approvals



### PG

PG hood		SKINTOP® gland	
size	part number	plastic	metal
<b>Top entry</b>			
PG 21	70050400	53015050	52015750
PG 29	70050600	53015060	52015760
<b>Side entry</b>			
PG 21	70052400	53015050	52015750
PG 29	70052600	53015060	52015760

### NPT

NPT hood		SKINTOP® gland	
size	part number	plastic	metal
<b>Top entry</b>			
3/4"	700504NP	S1134	53112034
1"	700506NP	S1101	53112044
<b>Side entry</b>			
3/4"	700524NP	S1134	53112034
1"	700526NP	S1101	53112044

NPT hood provided with NPT fitting

### metric

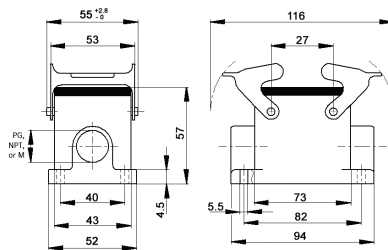
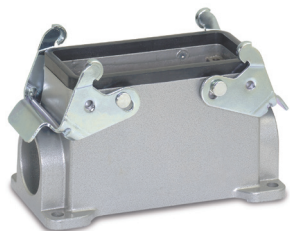
Metric hood		SKINTOP® gland	
size	part number	plastic	metal
<b>Top entry*</b>			
M25	79050400	53111030	53112030
M32	79050600	53111040	53112040
<b>Side entry</b>			
M25	79052400	53111030	53112030
M32	79052600	53111040	53112040

\* Metric hoods do not come with a neck

Recommended SKINTOP® assumes minimal OD variance. Additional configurations are available; please see our SKINTOP® section.  
If not otherwise specified, all values relating to the product are nominal values.  
Photographs are not to scale and are not true representations of the products in question.

## EPIC® HB 10 standard surface mount base

Surface mount base with double levers



all dimensions are in mm

### Technical data

**IP Protection class:** UL 50E Type 4, 12  
IP65

### Complete the installation



HB dust covers  
page <?>

### Approvals



### PG

size	PG base		SKINTOP® gland	
	part number	plastic	metal	
<b>One entry</b>				
PG 16	100340	53015040	52015740	
<b>Two entries</b>				
PG 16	100350	53015040	52015740	

### NPT

size	NPT base		SKINTOP® gland	
	part number	plastic	metal	
<b>One entry</b>				
½"	100340NP	S 1112	53112024	
<b>Two entries</b>				
½"	100350NP	S 1112	53112024	

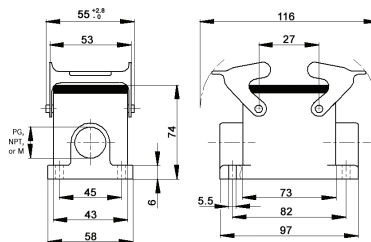
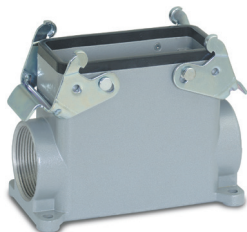
NPT base provided with NPT fitting

### metric

size	Metric base		SKINTOP® gland	
	part number	plastic	metal	
<b>One entry</b>				
M20	19034000	53111020	53112020	
M25	19034100	53111030	53112030	
<b>Two entries</b>				
M20	19035000	53111020	53112020	
M25	19035100	53111030	53112030	

## EPIC® HB 10 high profile surface mount base

Surface mount base with double levers



all dimensions are in mm

### Technical data

**IP Protection class:** UL 50E Type 4, 12  
IP65

### Complete the installation



HB dust covers  
page <?>

### Approvals



### PG

size	PG base		SKINTOP® gland	
	part number	plastic	metal	
<b>One entry</b>				
PG 21	700352	53015050	52015750	
PG 29	700354	53015060	52015760	
<b>Two entries</b>				
PG 21	700362	53015050	52015750	
PG 29	700364	53015060	52015760	

### NPT

size	NPT base		SKINTOP® gland	
	part number	plastic	metal	
<b>One entry</b>				
¾"	700352NP	S 1134	53112034	
1"	700354NP	S 1101	53112044	
<b>Two entries</b>				
¾"	700362NP	S 1134	53112034	
1"	700364NP	S 1101	53112044	

NPT base provided with NPT fitting

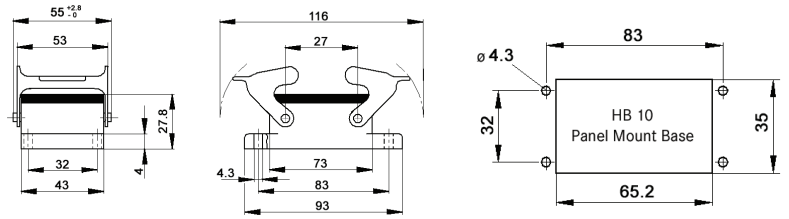
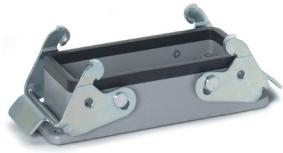
### metric

size	Metric base		SKINTOP® gland	
	part number	plastic	metal	
<b>One entry</b>				
M21	79035200	53111030	53112030	
M32	79035400	53111040	53112040	
<b>Two entries</b>				
M21	79036200	53111030	53112030	
M32	79036400	53111040	53112040	

Recommended SKINTOP® assumes minimal OD variance. Additional configurations are available; please see our SKINTOP® section.  
If not otherwise specified, all values relating to the product are nominal values.  
Photographs are not to scale and are not true representations of the products in question.

# EPIC® HB 10 panel mount base

Panel mount base with double levers



all dimensions are in mm

**Technical data**

**IP Protection class:** UL 50E Type 4, 12 IP65

**Complete the installation**

HB dust covers page <?>

**Approvals**

UL US RoHS

Dust cover included	Part number
no	100320C0

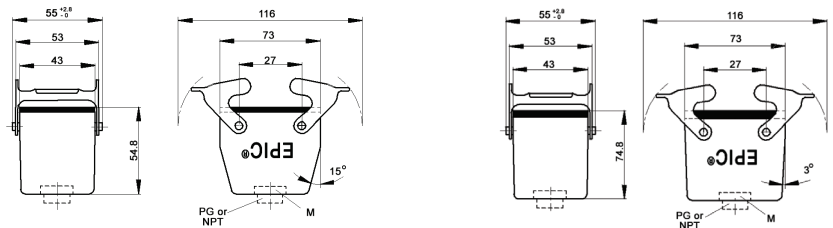
# EPIC® HB 10 cable coupler hood

Cable coupler with double levers



standard profile

high profile



all dimensions are in mm

**Technical data**

**IP Protection class:** UL 50E Type 4, 12 IP65

**Complete the installation**

HB dust covers page <?>

**Approvals**

UL US RoHS DE

**PG**

PG coupler size	part number	SKINTOP® gland	
		plastic	metal
<b>Standard profile</b>			
PG 16	100460	53015040	52015740
PG 21	700402	53015050	52015750
<b>High profile</b>			
PG 21	700404R	53015050	52015750
PG 29	700406	53015060	52015760

**NPT**

NPT coupler size	part number	SKINTOP® gland	
		plastic	metal
<b>Standard profile</b>			
1/2"	100460NP	S1112	53112024
3/4"	700402NP	S1134	53112034
<b>High profile</b>			
3/4"	700404NP	S1134	53112034
1"	700406NP	S1101	53112044

NPT coupler provided with NPT fitting

**metric**

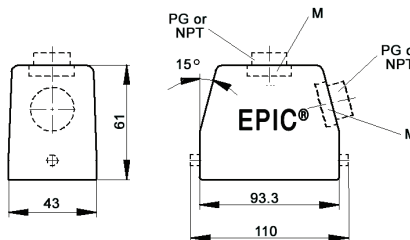
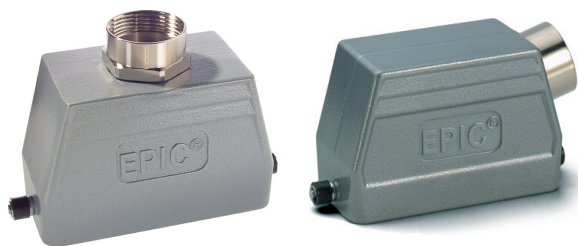
Metric coupler* size	part number	SKINTOP® gland	
		plastic	metal
<b>Standard profile</b>			
M20	19046000	53111020	53112020
M25	79040200	53111030	53112030
<b>High profile</b>			
M25	79040400	53111030	53112030
M32	79040600	53111040	53112040

\* Metric couplers do not come with a neck

Recommended SKINTOP® assumes minimal OD variance. Additional configurations are available; please see our SKINTOP® section. If not otherwise specified, all values relating to the product are nominal values. Photographs are not to scale and are not true representations of the products in question.

## EPIC® HB 16 standard hood

Single-entry hood with single lever bolts




all dimensions are in mm

### Technical data

**IP Protection class:** UL 50E Type 12  
NEMA 4  
IP65

### Complete the installation

 HB dust covers  
page <?>

### Approvals



### PG

PG hood		SKINTOP® gland	
size	part number	plastic	metal
<b>Top entry</b>			
PG 21	10080900	53015050	52015750
<b>Side entry</b>			
PG 21	10082900	53015050	53015750
PG 29	10092900	53015060	52015760

### NPT

NPT hood		SKINTOP® gland	
size	part number	plastic	metal
<b>Top entry</b>			
¾"	100809NP	S 1134	53112034
<b>Side entry</b>			
¾"	100829NP	S 1134	53112034
1"	100929NP	S 1101	53112044

NPT hood provided with NPT fitting

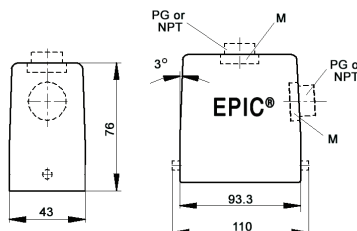
### metric

Metric hood		SKINTOP® gland	
size	part number	plastic	metal
<b>Top entry*</b>			
M25	19080900	53111030	53112030
<b>Side entry</b>			
M25	19082900	53111030	53112030
M32	19092900	53111040	53112040

\* Metric top-entry hoods do not come with a neck

## EPIC® HB 16 high profile hood

Single-entry hood with single lever bolts




all dimensions are in mm

### Technical data

**IP Protection class:** UL 50E Type 12  
NEMA 4  
IP65

### Complete the installation

 HB dust covers  
page <?>

### Approvals



### PG

PG hood		SKINTOP® gland	
size	part number	plastic	metal
<b>Top entry</b>			
PG 21	70094200	53015050	52015750
PG 29	70094400	53015060	52015760
<b>Side entry</b>			
PG 21	70104200	53015050	52015750
PG 29	70104400	53015060	52015760

### NPT

NPT hood		SKINTOP® gland	
size	part number	plastic	metal
<b>Top entry</b>			
¾"	700942NP	S 1134	53112034
1"	700944NP	S 1101	53112044
<b>Side entry</b>			
¾"	701042NP	S 1134	53112034
1"	701044NP	S 1101	53112044

NPT hood provided with NPT fitting

### metric

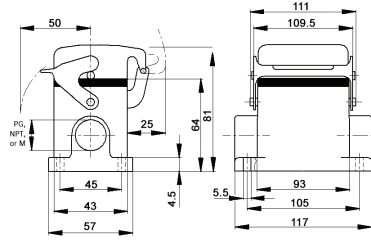
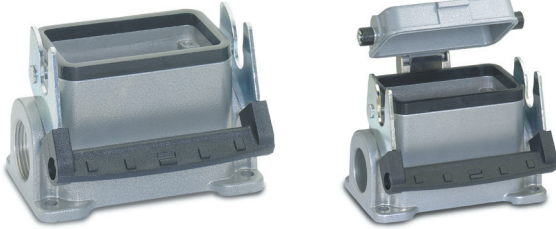
Metric hood		SKINTOP® gland	
size	part number	plastic	metal
<b>Top entry*</b>			
M25	79094200	53111030	53112030
M32	79094400	53111040	53112040
M40	79094600	53111050	53112050
<b>Side entry</b>			
M25	79104200	53111030	53112030
M32	79104400	53111040	53112040
M40	79104800	53111050	53112050

\* Metric hoods do not come with a neck

Recommended SKINTOP® assumes minimal OD variance. Additional configurations are available; please see our SKINTOP® section.  
If not otherwise specified, all values relating to the product are nominal values.  
Photographs are not to scale and are not true representations of the products in question.

## EPIC® HB 16 standard surface mount base

### Surface mount base with single lever




all dimensions are in mm

**Technical data**

**IP Protection class:** UL 50E Type 12  
NEMA 4  
IP65

**Complete the installation**

 HB dust covers page <?>

**Approvals**

**PG**

PG base size	PG base part number	Dust cover	SKINTOP® gland	
			plastic	metal
<b>One entry</b>				
21	100749	no	53015050	52015750
21	100769	yes	53015050	52015750
<b>Two entries</b>				
21	100759	no	53015050	52015750
21	100789	yes	53015050	52015750

**NPT**

NPT base size	NPT base part number	Dust cover	SKINTOP® gland	
			plastic	metal
<b>One entry</b>				
¾"	100749NP	no	S1134	53112034
¾"	100769NP	yes	S1134	53112034
<b>Two entries</b>				
¾"	100759NP	no	S1134	53112034
¾"	100789NP	yes	S1134	53112034

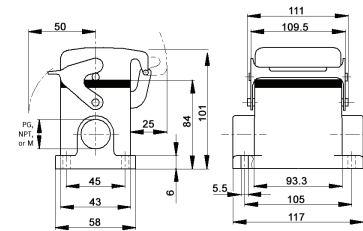
NPT base provided with NPT fitting

**metric**

Metric base size	Metric base part number	Dust cover	SKINTOP® gland	
			plastic	metal
<b>One entry</b>				
25	19074900	no	53111030	53112030
25	19076900	yes	53111030	53112030
<b>Two entries</b>				
25	19075900	no	53111030	53112030
25	19078900	yes	53111030	53112030

## EPIC® HB 16 high profile surface mount base

### Surface mount base with single lever




all dimensions are in mm

**Technical data**

**IP Protection class:** UL 50E Type 12  
NEMA 4  
IP65

**Complete the installation**

 HB dust covers page <?>

**Approvals**

**PG**

PG base size	PG base part number	Dust cover	SKINTOP® gland	
			plastic	metal
<b>One entry</b>				
21	701102	no	53015050	52015750
21	701142	yes	53015050	52015750
29	701104	no	53015060	52015760
29	701144	yes	53015060	52015760
<b>Two entries</b>				
21	701112	no	53015050	52015750
21	701152	yes	53015050	52015750
29	701114	no	53015060	52015760
29	701154	yes	53015060	52015760

**NPT**

NPT base size	NPT base part number	Dust cover	SKINTOP® gland	
			plastic	metal
<b>One entry</b>				
¾"	701102NP	no	S1134	53112034
¾"	701142NP	yes	S1134	53112034
1"	701104NP	no	S1101	53112044
1"	701144NP	yes	S1101	53112044
<b>Two entries</b>				
¾"	701112NP	no	S1134	53112034
¾"	701152NP	yes	S1134	53112034
1"	701114NP	no	S1101	53112044
1"	701154NP	yes	S1101	53112044

NPT base provided with NPT fitting

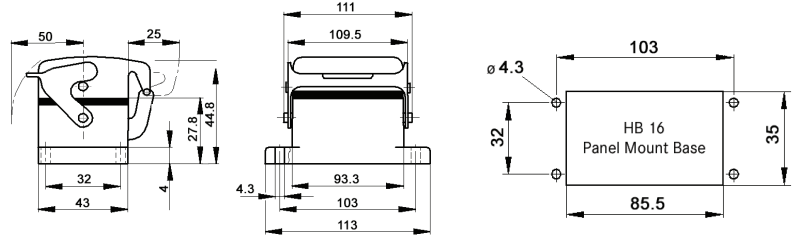
**metric**

Metric base size	Metric base part number	Dust cover	SKINTOP® gland	
			plastic	metal
<b>One entry</b>				
25	79110200	no	53111030	53112030
25	79114200	yes	53111030	53112030
32	79110400	no	53111040	53112040
32	79114400	yes	53111040	53112040
<b>Two entries</b>				
25	79111200	no	53111030	53112030
25	79115200	yes	53111030	53112030
32	79111400	no	53111040	53112040
32	79115400	yes	53111040	53112040

Photographs are not to scale and are not true representations of the products in question. Recommended SKINTOP® assumes minimal OD variance. Additional configurations are available; please see our SKINTOP® section. If not otherwise specified, all values relating to the product are nominal values.

# EPIC® HB 16 panel mount base

## Panel mount base with single lever




all dimensions are in mm

### Technical data

**IP Protection class:** UL 50E Type 12  
NEMA 4  
IP65

### Complete the installation

 HB dust covers  
page <?>

### Approvals



Dust cover included	Part number
no	10072900
yes	10073900

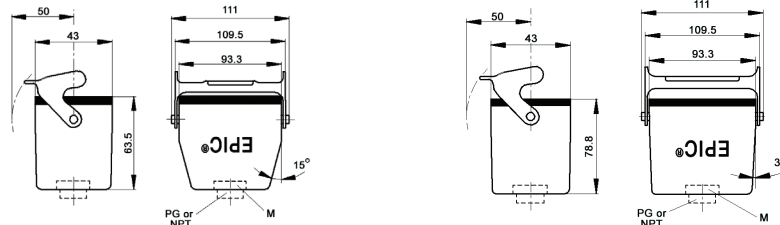
# EPIC® HB 16 cable coupler hood

## Cable coupler with single lever



standard profile

high profile




all dimensions are in mm

### Technical data

**IP Protection class:** UL 50E Type 12  
NEMA 4  
IP65

### Complete the installation

 HB dust covers  
page <?>

### Approvals



### PG

PG coupler		SKINTOP® gland	
size	part number	plastic	metal
<b>Standard profile</b>			
PG 21	100869	53015050	52015750
<b>High profile</b>			
PG 21	700922	53015050	52015750
PG 29	700924	53015060	52015760

### NPT

NPT coupler		SKINTOP® gland	
size	part number	plastic	metal
<b>Standard profile</b>			
3/4"	100869NP	S1134	53112034
<b>High profile</b>			
3/4"	700922NP	S1134	53112034
1"	700924NP	S1101	53112044

NPT coupler provided with NPT fitting

### metric

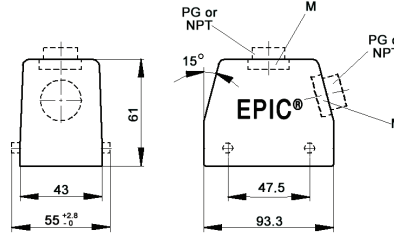
Metric coupler*		SKINTOP® gland	
size	part number	plastic	metal
<b>Standard profile</b>			
M25	19086900	53111030	53112030
<b>High profile</b>			
M25	79092200	53111030	53112030
M32	79092400	53111040	53112040

\* Metric couplers do not come with a neck

Recommended SKINTOP® assumes minimal OD variance. Additional configurations are available; please see our SKINTOP® section.  
If not otherwise specified, all values relating to the product are nominal values.  
Photographs are not to scale and are not true representations of the products in question.

## EPIC® HB 16 standard hood

Hood with double lever bolts



all dimensions are in mm



### Technical data

**IP Protection class:** UL 50E Type 4, 12  
IP65

### Complete the installation



HB dust covers  
page <?>

### Approvals



### PG

PG hood		SKINTOP® gland	
size	part number	plastic	metal
<b>Top entry</b>			
PG 21	10080000	53015050	52015750
PG 29	10090000	53015060	52015760
<b>Side entry</b>			
PG 21	10082000	53015050	52015750
PG 29	10092000	53015060	52015760

### NPT

NPT hood		SKINTOP® gland	
size	part number	plastic	metal
<b>Top entry</b>			
3/4"	100800NP	S1134	53112034
1"	100900NP	S1101	53112044
<b>Side entry</b>			
3/4"	100820NP	S1134	53112034
1"	100920NP	S1101	53112044

NPT hood provided with NPT fitting

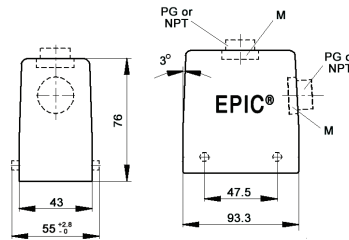
### metric

Metric hood		SKINTOP® gland	
size	part number	plastic	metal
<b>Top entry</b>			
M25	19080000*	53111030	53112030
M25x2	19080500	53111030	53112030
M32	19090000*	53111040	53112040
<b>Side entry</b>			
M25	19082000	53111030	53112030
M32	19092000	53111040	53112040

\* Metric top-entry hoods do not come with a neck

## EPIC® HB 16 high profile hood

Hood with double lever bolts



all dimensions are in mm



### Technical data

**IP Protection class:** UL 50E Type 4, 12  
IP65

### Complete the installation



HB dust covers  
page <?>

### Approvals



### PG

PG hood		SKINTOP® gland	
size	part number	plastic	metal
<b>Top entry</b>			
PG 21	70100200	53015050	52015750
PG 29	70100400	53015060	52015760
<b>Side entry</b>			
PG 21	70102200	53015050	52015750
PG 29	70102400	53015060	52015760

### NPT

NPT hood		SKINTOP® gland	
size	part number	plastic	metal
<b>Top entry</b>			
3/4"	701002NP	S1134	53112034
1"	701004NP	S1101	53112044
<b>Side entry</b>			
3/4"	701022NP	S1134	53112034
1"	701024NP	S1101	53112044

NPT hood provided with NPT fitting

### metric

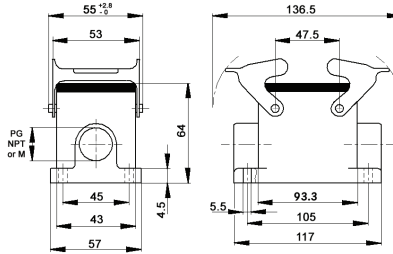
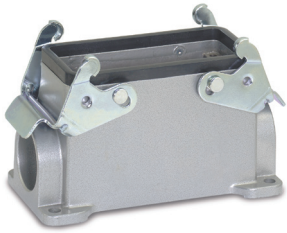
Metric hood*		SKINTOP® gland	
size	part number	plastic	metal
<b>Top entry</b>			
M25	79100200	53111030	53112030
M25x2	44422018	53111030	53112030
M32	79100400	53111040	53112040
M32x2	79128600	53111040	53112040
M40	79100800	53111050	53112050
<b>Side entry</b>			
M25	79102200	53111030	53112030
M32	79102400	53111040	53112040
M40	79102800	53111050	53112050

\* Metric hoods do not come with a neck

Recommended SKINTOP® assumes minimal OD variance. Additional configurations are available; please see our SKINTOP® section.  
If not otherwise specified, all values relating to the product are nominal values.  
Photographs are not to scale and are not true representations of the products in question.

## EPIC® HB 16 standard surface mount base

Surface mount base with double levers



all dimensions are in mm

### Technical data

**IP Protection class:** UL 50E Type 4, 12  
IP65

### Complete the installation



HB dust covers  
page <?>

### Approvals



### PG

PG base		SKINTOP® gland	
size	part number	plastic	metal
<b>One entry</b>			
PG 21	100740	53015050	52015750
<b>Two entries</b>			
PG 21	100750	53015050	52015750

### NPT

NPT base		SKINTOP® gland	
size	part number	plastic	metal
<b>One entry</b>			
3/4"	100740NP	S 1134	53112034
<b>Two entries</b>			
3/4"	100750NP	S 1134	53112034

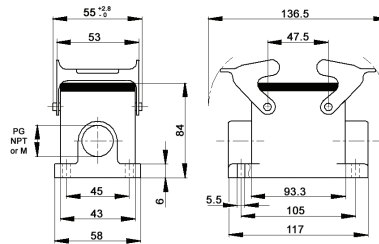
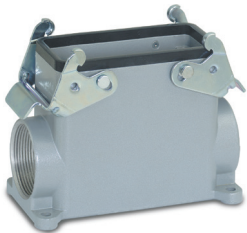
NPT base provided with NPT fitting

### metric

Metric base		SKINTOP® gland	
size	part number	plastic	metal
<b>One entry</b>			
M25	19074000	53111030	53112030
<b>Two entries</b>			
M25	19075000	53111030	53112030

## EPIC® HB 16 high profile surface mount base

Surface mount base with double levers



all dimensions are in mm

### Technical data

**IP Protection class:** UL 50E Type 4, 12  
IP65

### Complete the installation



HB dust covers  
page <?>

### Approvals



### PG

PG base		SKINTOP® gland	
size	part number	plastic	metal
<b>One entry</b>			
PG 21	700852	53015050	52015750
PG 29	700854	53015060	52015760
<b>Two entries</b>			
PG 21	700862	53015050	52015750
PG 29	700864	53015060	52015760

### NPT

NPT base		SKINTOP® gland	
size	part number	plastic	metal
<b>One entry</b>			
3/4"	700852NP	S 1134	53112034
1"	700854NP	S 1101	53112044
<b>Two entries</b>			
3/4"	700862NP	S 1134	53112034
1"	700864NP	S 1101	53112044

NPT base provided with NPT fitting

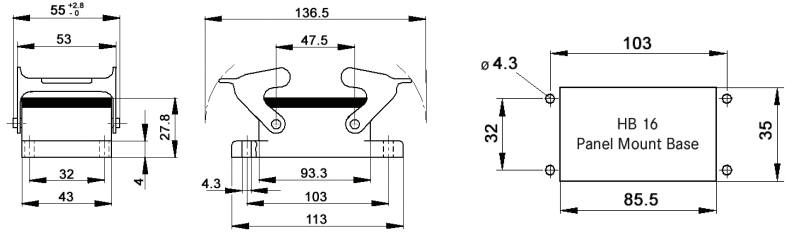
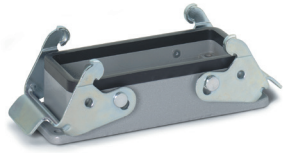
### metric

Metric base		SKINTOP® gland	
size	part number	plastic	metal
<b>One entry</b>			
M25	79085200	53111030	53112030
M32	79085400	53111040	53112040
<b>Two entries</b>			
M25	79086200	53111030	53112030
M32	79086400	53111040	53112040

Recommended SKINTOP® assumes minimal OD variance. Additional configurations are available; please see our SKINTOP® section.  
If not otherwise specified, all values relating to the product are nominal values.  
Photographs are not to scale and are not true representations of the products in question.

# EPIC® HB 16 panel mount base

## Panel mount base with double levers



all dimensions are in mm

**Technical data**

**IP Protection class:** UL 50E Type 4, 12 IP65

**Complete the installation**

HB dust covers page <?>

**Approvals**

UL US RoHS

Dust cover included	Part number
no	100720C0

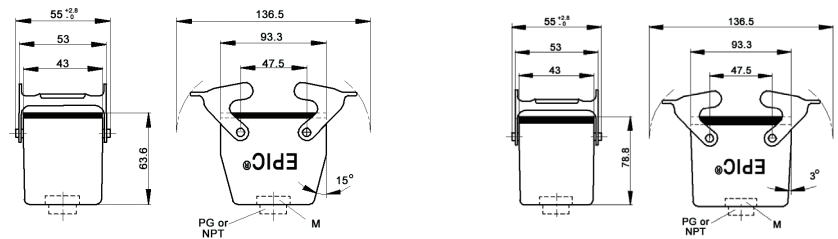
# EPIC® HB 16 cable coupler hood

## Cable coupler with double levers



standard profile

high profile



all dimensions are in mm

**Technical data**

**IP Protection class:** UL 50E Type 4, 12 IP65

**Complete the installation**

HB dust covers page <?>

**Approvals**

UL US RoHS DE

**PG**

PG coupler size	part number	SKINTOP® gland	
		plastic	metal
<b>Standard profile</b>			
PG 21	100860	53015050	52015750
<b>High profile</b>			
PG 29	700904	53015060	52015760

**NPT**

NPT coupler size	part number	SKINTOP® gland	
		plastic	metal
<b>Standard profile</b>			
3/4"	100860NP	S1134	53112034
<b>High profile</b>			
3/4"	700902NP	S1134	53112034
1"	700904NP	S1101	53112044

NPT coupler provided with NPT fitting

**metric**

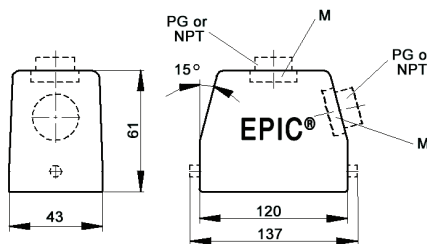
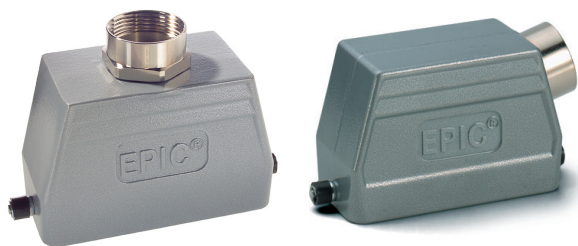
Metric coupler* size	part number	SKINTOP® gland	
		plastic	metal
<b>Standard profile</b>			
M25	19086000	53111030	53112030
<b>High profile</b>			
M25	79090200	53111030	53112030
M32	79090400	53111040	53112040

\* Metric couplers do not come with a neck

Recommended SKINTOP® assumes minimal OD variance. Additional configurations are available; please see our SKINTOP® section. If not otherwise specified, all values relating to the product are nominal values. Photographs are not to scale and are not true representations of the products in question.

## EPIC® HB 24 standard hood

Hood with single lever bolts




all dimensions are in mm

### Technical data

**IP Protection class:** UL 50E Type 12  
NEMA 4  
IP65

### Complete the installation

 HB dust covers  
page <?>

### Approvals



### PG

PG hood		SKINTOP® gland	
size	part number	plastic	metal
<b>Top entry</b>			
PG 21	10121900	53015050	52015750
PG 29	10111900	53015060	52015760
<b>Side entry</b>			
PG 21	10113900	53015050	52015750
PG 29	10123900	53015060	52015760

### NPT

NPT hood		SKINTOP® gland	
size	part number	plastic	metal
<b>Top entry</b>			
¾"	101219NP	S 1134	53112034
1"	101119NP	S 1101	53112044
<b>Side entry</b>			
¾"	101139NP	S 1134	53112034
1"	101239NP	S 1101	53112044

NPT hood provided with NPT fitting

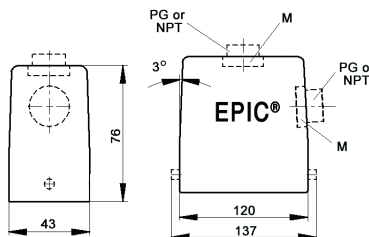
### metric

Metric hood		SKINTOP® gland	
size	part number	plastic	metal
<b>Top entry*</b>			
M25	19121900	53111030	53112030
M32	19111900	53111040	53112040
<b>Side entry</b>			
M25	19113900	53111030	53112030
M32	19123900	53111040	53112040

\* Metric top-entry hoods do not come with a neck

## EPIC® HB 24 high profile hood

Hood with single lever bolts




all dimensions are in mm

### Technical data

**IP Protection class:** UL 50E Type 12  
NEMA 4  
IP65

### Complete the installation

 HB dust covers  
page <?>

### Approvals



### PG

PG hood		SKINTOP® gland	
size	part number	plastic	metal
<b>Top entry</b>			
PG 21	70144400	53015050	52015750
PG 29	70144600	53015060	52015760
<b>Side entry</b>			
PG 21	70154400	53015050	52015750
PG 29	70154600	53015060	52015760

### NPT

NPT hood		SKINTOP® gland	
size	part number	plastic	metal
<b>Top entry</b>			
¾"	701444NP	S 1134	53112034
1"	701446NP	S 1101	53112044
<b>Side entry</b>			
¾"	701544NP	S 1134	53112034
1"	701546NP	S 1101	53112044

NPT hood provided with NPT fitting

### metric

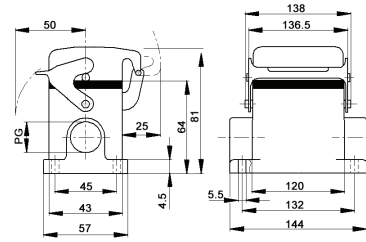
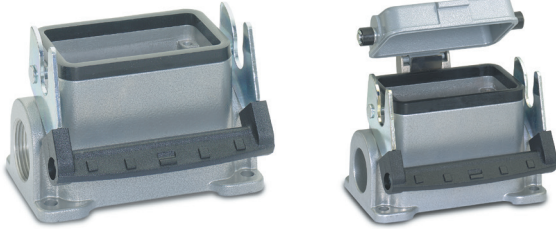
Metric hood		SKINTOP® gland	
size	part number	plastic	metal
<b>Top entry*</b>			
M25	79144400	53111030	53112030
M32	79144600	53111040	53112040
M40	79144800	53111050	53112050
<b>Side entry</b>			
M25	79154400	53111030	53112030
M32	79154600	53111040	53112040
M40	79154800	53111050	53112050

\* Metric hoods do not come with a neck

Recommended SKINTOP® assumes minimal OD variance. Additional configurations are available; please see our SKINTOP® section.  
If not otherwise specified, all values relating to the product are nominal values.  
Photographs are not to scale and are not true representations of the products in question.

## EPIC® HB 24 standard surface mount base

Surface mount base with single lever



all dimensions are in mm

### Technical data

**IP Protection class:** UL 50E Type 12  
NEMA 4  
IP65

### Complete the installation



HB dust covers  
page <?>

### Approvals



### PG

size	PG base		Dust cover	SKINTOP® gland	
	part number			plastic	metal
<b>One entry</b>					
21	101049		no	53015050	52015750
21	101079		yes	53015050	52015750
<b>Two entries</b>					
21	101059		no	53015050	52015750
21	101099		yes	53015050	52015750

### NPT

size	NPT base		Dust cover	SKINTOP® gland	
	part number			plastic	metal
<b>One entry</b>					
¾"	101049NP		no	S1134	53112034
¾"	101079NP		yes	S1134	53112034
<b>Two entries</b>					
¾"	101059NP		no	S1134	53112034
¾"	101099NP		yes	S1134	53112034

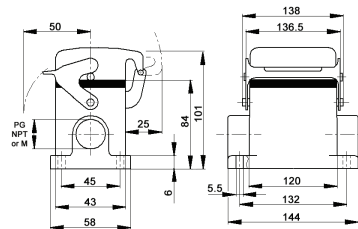
NPT base provided with NPT fitting

### metric

size	Metric base		Dust cover	SKINTOP® gland	
	part number			plastic	metal
<b>One entry</b>					
25	19104900		no	53111030	53112030
25	19107900		yes	53111030	53112030
<b>Two entries</b>					
25	19105900		no	53111030	53112030
25	19109900		yes	53111030	53112030

## EPIC® HB 24 high profile surface mount base

Surface mount base with single lever



all dimensions are in mm

### Technical data

**IP Protection class:** UL 50E Type 12  
NEMA 4  
IP65

### Complete the installation



HB dust covers  
page <?>

### Approvals



### PG

size	PG base		Dust cover	SKINTOP® gland	
	part number			plastic	metal
<b>One entry</b>					
21	701602		no	53015050	52015750
21	701642		yes	53015050	52015750
29	701604R		no	53015060	52015760
29	701644		yes	53015060	52015760
<b>Two entries</b>					
21	701112		no	53015050	52015750
21	701152		yes	53015050	52015750
29	701114		no	53015060	52015760
29	701154		yes	53015060	52015760

### NPT

size	NPT base		Dust cover	SKINTOP® gland	
	part number			plastic	metal
<b>One entry</b>					
¾"	701602NP		no	S1134	53112034
¾"	701642NP		yes	S1134	53112034
1"	701604NP		no	S1101	53112044
1"	701644NP		yes	S1101	53112044
<b>Two entries</b>					
¾"	701612NP		no	S1134	53112034
¾"	701652NP		yes	S1134	53112034
1"	701614NP		no	S1101	53112044
1"	701654NP		yes	S1101	53112044

NPT base provided with NPT fitting

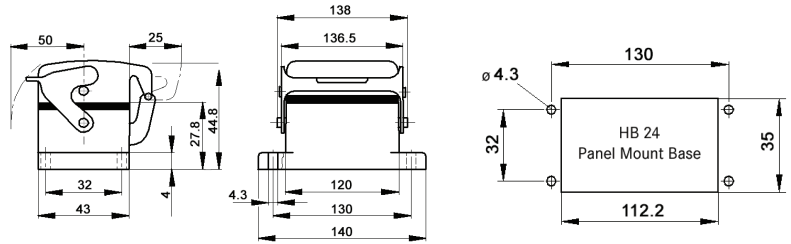
### metric

size	Metric base		Dust cover	SKINTOP® gland	
	part number			plastic	metal
<b>One entry</b>					
25	79160200		no	53111030	53112030
25	79164200		yes	53111030	53112030
32	79160400		no	53111040	53112040
32	79164400		yes	53111040	53112040
<b>Two entries</b>					
25	79161200		no	53111030	53112030
25	79165200		yes	53111030	53112030
32	79161400		no	53111030	53112030
32	79165400		yes	53111030	53112030

Photographs are not to scale and are not true representations of the products in question. Recommended SKINTOP® assumes minimal OD variance. Additional configurations are available; please see our SKINTOP® section. If not otherwise specified, all values relating to the product are nominal values.

## EPIC® HB 24 panel mount base

Panel mount base with single lever



all dimensions are in mm

### Technical data

**IP Protection class:** UL 50E Type 12  
NEMA 4  
IP65

### Complete the installation



HB dust covers  
page <?>

### Approvals



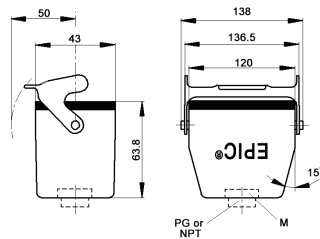
Dust cover included	Part number
no	10102900
yes	10103900

## EPIC® HB 24 cable coupler hood

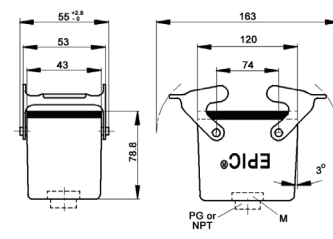
Cable coupler with single lever



### standard profile



### high profile



all dimensions are in mm

### Technical data

**IP Protection class:** UL 50E Type 12  
NEMA 4  
IP65

### Complete the installation



HB dust covers  
page <?>

### Approvals



### PG

PG coupler		SKINTOP® gland	
size	part number	plastic	metal
<b>Standard profile</b>			
PG 21	101279	53015050	52015750
PG 29	101179	53015060	52015760
<b>High profile</b>			
PG 21	701424	753015050	52015750
PG 29	701426	75015060	72015760

### NPT

NPT coupler		SKINTOP® gland	
size	part number	plastic	metal
<b>Standard profile</b>			
¾"	101279NP	S 1134	53112034
1"	101179NP	S 1101	53112044
<b>High profile</b>			
¾"	701424NP	S 1134	53112034
1"	701426NP	S 1101	53112044

### metric

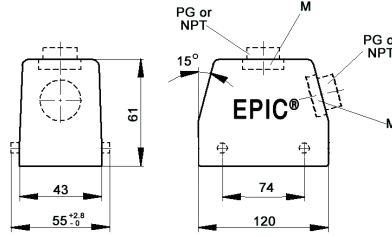
Metric coupler*		SKINTOP® gland	
size	part number	plastic	metal
<b>Standard profile</b>			
M25	19127900	53111030	53112030
M32	19117900	53111040	53112040
<b>High profile</b>			
M25	79142400	53111030	53112030
M32	79142600	53111040	53112040

\* Metric couplers do not come with a neck

Recommended SKINTOP® assumes minimal OD variance. Additional configurations are available; please see our SKINTOP® section.  
If not otherwise specified, all values relating to the product are nominal values.  
Photographs are not to scale and are not true representations of the products in question.

## EPIC® HB 24 standard hood

Hood with double lever bolts



all dimensions are in mm



### Technical data

**IP Protection class:** UL 50E Type 4, 12  
IP65

### Complete the installation



HB dust covers  
page <?>

### Approvals



### PG

PG hood		SKINTOP® gland	
size	part number	plastic	metal
<b>Top entry</b>			
PG 21	10121000	53015050	52015750
PG 29	10111000	53015060	52015760
<b>Side entry</b>			
PG 21	10113000	53015050	52015750
PG 29	10123000	53015060	52015760

### NPT

NPT hood		SKINTOP® gland	
size	part number	plastic	metal
<b>Top entry</b>			
3/4"	101210NP	S1134	53112034
1"	101110NP	S1101	53112044
<b>Side entry</b>			
3/4"	101130NP	S1134	53112034
1"	101230NP	S1101	53112044

NPT hood provided with NPT fitting

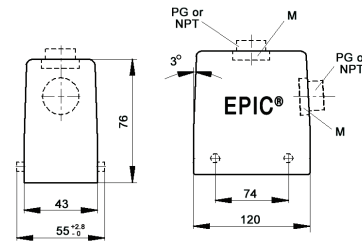
### metric

Metric hood		SKINTOP® gland	
size	part number	plastic	metal
<b>Top entry</b>			
M25	19121000*	53111030	53112030
M25x2	44422019	53111030	53112030
M32	19111000*	53111040	53112040
M32x2	44422020	53111040	53112040
<b>Side entry</b>			
M25	19113000	53111030	53112030
M32	19123000	53111040	53112040

\* Metric top-entry hoods do not come with a neck

## EPIC® HB 24 high profile hood

Hood with double lever bolts



all dimensions are in mm



### Technical data

**IP Protection class:** UL 50E Type 4, 12  
IP65

### Complete the installation



HB dust covers  
page <?>

### Approvals



### PG

PG hood		SKINTOP® gland	
size	part number	plastic	metal
<b>Top entry</b>			
PG 21	70150400	53015050	52015750
PG 29	70150600	53015060	52015760
<b>Side entry</b>			
PG 21	70152400	53015050	52015750
PG 29	70152600	53015060	52015760

### NPT

NPT hood		SKINTOP® gland	
size	part number	plastic	metal
<b>Top entry</b>			
3/4"	701504NP	S1134	53112034
1"	701506NP	S1101	53112044
<b>Side entry</b>			
3/4"	701524NP	S1134	53112034
1"	701526NP	S1101	53112044

NPT hood provided with NPT fitting

### metric

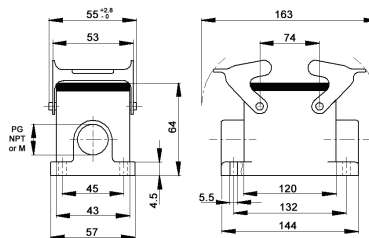
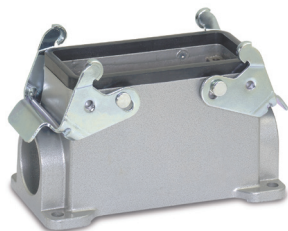
Metric hood		SKINTOP® gland	
size	part number	plastic	metal
<b>Top entry*</b>			
M25	79150400	53111030	53112030
M25x2	44422021	53111030	53112030
M32	79150600	53111040	53112040
M32x2	79178500	53111040	53112040
M40	79150800	53111050	53112050
<b>Side entry</b>			
M25	79152400	53111030	53112030
M32	79152600	53111040	53112040
M40	79152800	53111050	53112050

\* Metric hoods do not come with a neck

Recommended SKINTOP® assumes minimal OD variance. Additional configurations are available; please see our SKINTOP® section.  
If not otherwise specified, all values relating to the product are nominal values.  
Photographs are not to scale and are not true representations of the products in question.

## EPIC® HB 24 standard surface mount base

Surface mount base with double levers



all dimensions are in mm

### Technical data

**IP Protection class:** UL 50E Type 4, 12  
IP65

### Complete the installation

HB dust covers  
page <?>

### Approvals



### PG

PG base		SKINTOP® gland	
size	part number	plastic	metal
<b>One entry</b>			
PG 21	101040	53015050	52015750
<b>Two entries</b>			
PG 21	101050	53015050	52015750

### NPT

NPT base		SKINTOP® gland	
size	part number	plastic	metal
<b>One entry</b>			
3/4"	101040NP	S 1134	53112034
<b>Two entries</b>			
3/4"	101050NP	S 1134	53112034

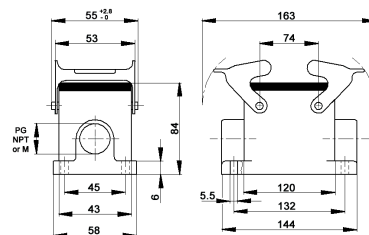
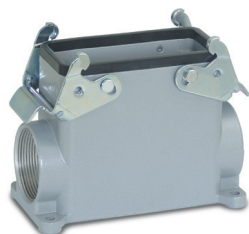
NPT base provided with NPT fitting

### metric

Metric base		SKINTOP® gland	
size	part number	plastic	metal
<b>One entry</b>			
M25	19104000	53111030	53112030
<b>Two entries</b>			
M25	19105000	53111030	53112030

## EPIC® HB 24 high profile surface mount base

Surface mount base with double levers



all dimensions are in mm

### Technical data

**IP Protection class:** UL 50E Type 4, 12  
IP65

### Complete the installation

HB dust covers  
page <?>

### Approvals



### PG

PG base		SKINTOP® gland	
size	part number	plastic	metal
<b>One entry</b>			
PG 29	701354	53015060	52015760
<b>Two entries</b>			
PG 21	701362	53015050	52015750
PG 29	701364	53015060	52015760

### NPT

NPT base		SKINTOP® gland	
size	part number	plastic	metal
<b>One entry</b>			
3/4"	701352NP	S 1134	53112034
1"	701354NP	S 1101	53112044
<b>Two entries</b>			
3/4"	701362NP	S 1134	53112034
1"	701364NP	S 1101	53112044

NPT base provided with NPT fitting

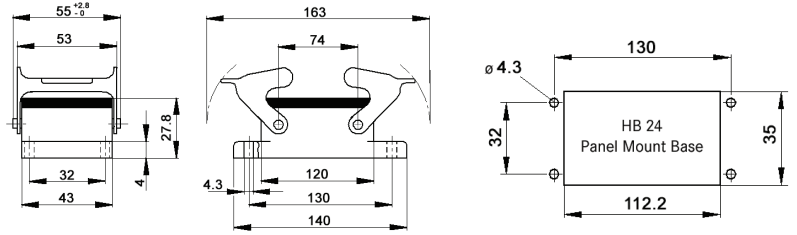
### metric

Metric base		SKINTOP® gland	
size	part number	plastic	metal
<b>One entry</b>			
M25	79135200	53111030	53112030
M32	79135400	53111040	53112040
<b>Two entries</b>			
M25	79136200	53111030	53112030
M32	79136400	53111040	53112040

Recommended SKINTOP® assumes minimal OD variance. Additional configurations are available; please see our SKINTOP® section.  
If not otherwise specified, all values relating to the product are nominal values.  
Photographs are not to scale and are not true representations of the products in question.

# EPIC® HB 24 panel mount base

## Panel mount base with double levers



all dimensions are in mm

**Technical data**

**IP Protection class:** UL 50E Type 4, 12 IP65

**Complete the installation**

HB dust covers page <?>

**Approvals**

UL US RoHS

Dust cover included	Part number
no	101020C0

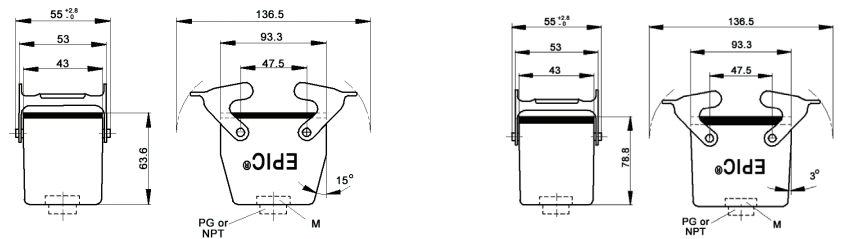
# EPIC® HB 24 cable coupler hood

## Cable coupler with double levers



standard profile

high profile



all dimensions are in mm

**Technical data**

**IP Protection class:** UL 50E Type 4, 12 IP65

**Complete the installation**

HB dust covers page <?>

**Approvals**

UL US RoHS DE

**PG**

PG coupler size	part number	SKINTOP® gland	
		plastic	metal
<b>Standard profile</b>			
PG 21	101270	53015050	52015750
PG 29	101170	53015060	52015760
<b>High profile</b>			
PG 21	701404R	53015050	52015750

**NPT**

NPT coupler size	part number	SKINTOP® gland	
		plastic	metal
<b>Standard profile</b>			
3/4"	101270NP	S 1134	53112034
1"	101170NP	S 1101	53112044
<b>High profile</b>			
3/4"	701404NP	S 1134	53112034
1"	701406NP	S 1101	53112044

**metric**

Metric coupler* size	part number	SKINTOP® gland	
		plastic	metal
<b>Standard profile</b>			
M25	19127000	53111030	53112030
M32	19117000	53111040	53112040
<b>High profile</b>			
M25	79140400	53111030	53112030
M32	79140600	53111040	53112040

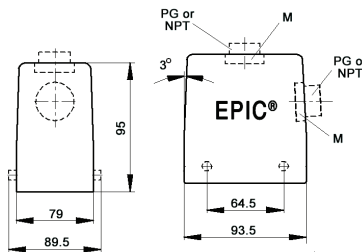
NPT coupler provided with NPT fitting

\* Metric couplers do not come with a neck

Recommended SKINTOP® assumes minimal OD variance. Additional configurations are available; please see our SKINTOP® section. If not otherwise specified, all values relating to the product are nominal values. Photographs are not to scale and are not true representations of the products in question.

# EPIC® HB 32 standard hood

Hood with double lever bolts



all dimensions are in mm



### Technical data

**IP Protection class:** NEMA 4, NEMA 12  
IP65

### Complete the installation

HB dust covers  
page <?>

### Approvals



### PG

PG hood		SKINTOP® gland	
size	part number	plastic	metal
<b>Top entry</b>			
PG 21	10133000	53015050	52015750
PG 29	10134000	53015060	52015760
<b>Side entry</b>			
PG 21	10135000	53015050	52015750
PG 29	10136000	53015060	52015760

### NPT

NPT hood		SKINTOP® gland	
size	part number	plastic	metal
<b>Top entry</b>			
¾"	101330NP	S 1134	53112034
1"	101340NP	S 1101	53112044
1¼"	101343NP	—	53112054
<b>Side entry</b>			
¾"	101350NP	S 1134	53112034
1"	101360NP	S 1101	53112044

NPT hood provided with NPT fitting

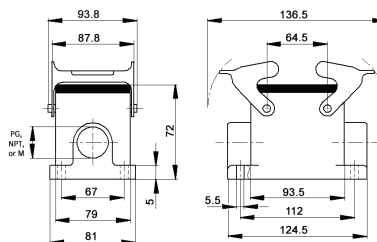
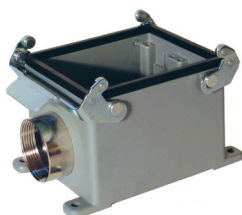
### metric

Metric hood		SKINTOP® gland	
size	part number	plastic	metal
<b>Top entry*</b>			
M25x2	44422022	53111030	53112030
M32	19134000	53111040	53112040
M32x2	44422023	53111040	53112040
M40	19134400	53111050	53112050
<b>Side entry</b>			
M25	19135000	53111030	53112030
M32	19136000	53111040	53112040
M40	19136200	53111050	53112050

\* Metric top-entry hoods do not come with a neck

# EPIC® HB 32 surface mount base

Surface mount base with double levers



all dimensions are in mm

### Technical data

**IP Protection class:** NEMA 4, NEMA 12  
IP65

### Complete the installation

HB dust covers  
page <?>

### Approvals



### PG

PG base		SKINTOP® gland	
size	part number	plastic	metal
<b>One entry</b>			
PG 29	101370	53015060	52015760
<b>Two entries</b>			
PG 29	101380	53015060	52015760

### NPT

NPT base		SKINTOP® gland	
size	part number	plastic	metal
<b>One entry</b>			
1"	101370NP	S 1101	53112044
<b>Two entries</b>			
1"	101380NP	S 1101	53112044

NPT base provided with NPT fitting

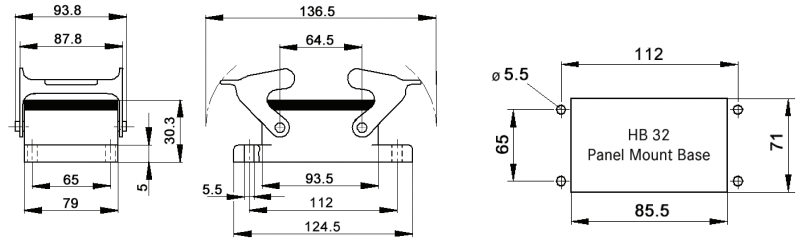
### metric

Metric base		SKINTOP® gland	
size	part number	plastic	metal
<b>One entry</b>			
M32	19137000	53111040	53112040
M40	19145400	53111050	53112050
<b>Two entries</b>			
M32	19138000	53111040	53112040
M40	19146400	53111050	53112050

Recommended SKINTOP® assumes minimal OD variance. Additional configurations are available; please see our SKINTOP® section. If not otherwise specified, all values relating to the product are nominal values. Photographs are not to scale and are not true representations of the products in question.

## EPIC® HB 32 panel mount base

Panel mount base with double levers



all dimensions are in mm

### Technical data

**IP Protection class:** NEMA 4, NEMA 12  
IP65

### Complete the installation



HB dust covers  
page <?>

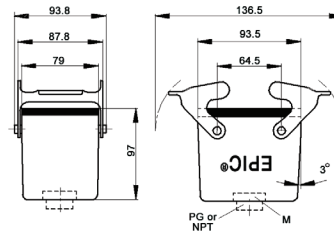
### Approvals



Dust cover included	Part number
no	101320C0

## EPIC® HB 32 cable coupler hood

Cable coupler with double levers



all dimensions are in mm

### Technical data

**IP Protection class:** NEMA 4, NEMA 12  
IP65

### Complete the installation



HB dust covers  
page <?>

### Approvals



### PG

PG coupler size	PG coupler part number	SKINTOP® gland	
		plastic	metal
PG 21	101390	53015050	52015750
PG 29	101395	53015060	52015760

### NPT

NPT coupler size	NPT coupler part number	SKINTOP® gland	
		plastic	metal
3/4"	101390NP	S1134	53112034
1"	101395NP	S1101	53112044

NPT coupler provided with NPT fitting

### metric

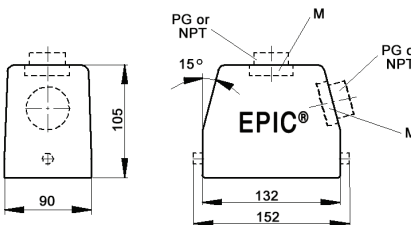
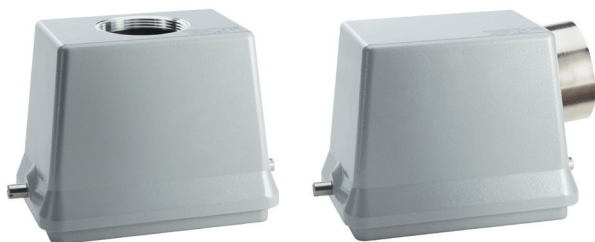
Metric coupler size	Metric coupler part number	SKINTOP® gland	
		plastic	metal
M32	19139500	53111040	53112040

Metric couplers do not come with a neck

Recommended SKINTOP® assumes minimal OD variance. Additional configurations are available; please see our SKINTOP® section.  
If not otherwise specified, all values relating to the product are nominal values.  
Photographs are not to scale and are not true representations of the products in question.

# EPIC® HB 48 standard hood

Hood with single lever bolts



all dimensions are in mm

### Technical data

**IP Protection class:** NEMA 4, NEMA 12  
IP65

### Complete the installation

HB dust covers  
page <?>

### Approvals



### PG

PG hood		SKINTOP® gland	
size	part number	plastic	metal
<b>Top entry</b>			
PG 29	10155000	53015060	52015760
PG 36	10156000	53015070	52015765
PG 42	10157000	53015080	52015766
<b>Side entry</b>			
PG 29	10158000	53015060	52015760
PG 36	10159000	53015070	52015765
PG 42	10160000	53015080	52015766

### NPT

NPT hood		SKINTOP® gland	
size	part number	plastic	metal
<b>Top entry</b>			
1"	101550NP	S 1101	53112044
1¼"	101560NP	—	53112054
<b>Side entry</b>			
1"	101580NP	S 1101	53112044
1¼"	101590NP	—	53112054

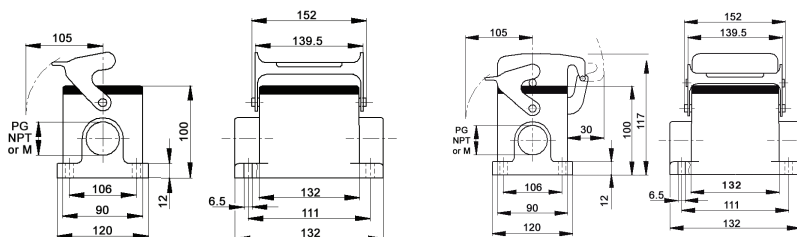
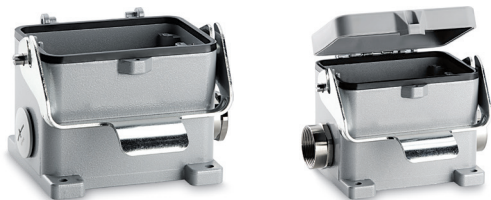
### metric

Metric hood*		SKINTOP® gland	
size	part number	plastic	metal
<b>Top entry</b>			
M32	19155000	53111040	53112040
M40	19156000	53111050	53112050
M50	19157000	53111060	53112060
<b>Side entry</b>			
M32	19158000	53111040	53112040
M40	19159000	53111050	53112050
M50	19160000	53111060	53112060

\* Metric hoods do not come with a neck

# EPIC® HB 48 surface mount base

Surface mount base with single lever



all dimensions are in mm

### Technical data

**IP Protection class:** NEMA 4, NEMA 12  
IP65

### Complete the installation

HB dust covers  
page <?>

### Approvals



### PG

PG base	Dust cover	SKINTOP® gland	
size part number		plastic	metal
<b>One entry</b>			
29 101650	no	53015060	52015760
29 101670	yes	53015060	52015760
36 101651	no	53015070	52015765
36 101671	yes	53015070	52015765
<b>Two entries</b>			
29 101660	no	53015060	52015760
29 101680	yes	53015060	52015760
36 101661	no	53015070	52015765
36 101681	yes	53015070	52015765

PG base provided with EPIC® SM/SP gland

### NPT

NPT base	Dust cover	SKINTOP® gland	
size part number		plastic	metal
<b>One entry</b>			
1" 101650NP	no	S 1101	53112044
1" 101670NP	yes	S 1101	53112044
1¼" 101651NP	no	—	53112054
1¼" 101671NP	yes	—	53112054
<b>Two entries</b>			
1" 101660NP	no	S 1101	53112044
1" 101680NP	yes	S 1101	53112044
1¼" 101661NP	no	—	53112054
1¼" 101681NP	yes	—	53112054

NPT base provided with NPT fitting

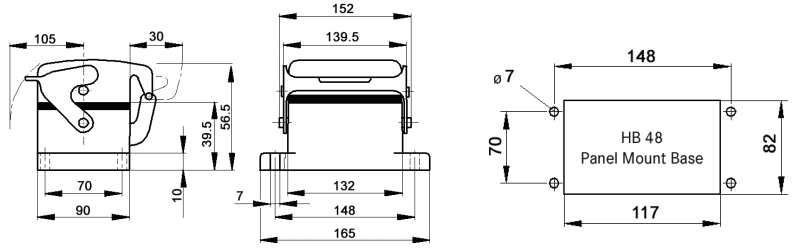
### metric

Metric base	Dust cover	SKINTOP® gland	
size part number		plastic	metal
<b>One entry</b>			
32 19165000	no	53111040	53112040
32 19167000	yes	53111040	53112040
40 19165100	no	53111050	53112050
40 19167100	yes	53111050	53112050
<b>Two entries</b>			
32 19166000	no	53111040	53112040
32 19168000	yes	53111040	53112040
40 19166100	no	53111050	53112050
40 19168100	yes	53111050	53112050

Recommended SKINTOP® assumes minimal OD variance. Additional configurations are available; please see our SKINTOP® section.  
If not otherwise specified, all values relating to the product are nominal values.  
Photographs are not to scale and are not true representations of the products in question.

# EPIC® HB 48 panel mount base

## Panel mount base with single lever




all dimensions are in mm


**Technical data**

**IP Protection class:** NEMA 4, NEMA 12  
IP65

**Complete the installation**

 HB dust covers  
page <?>

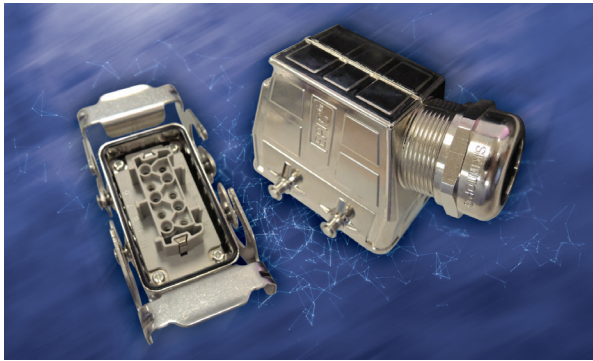
**Approvals**



Dust cover included	Hardware	Part number
no	—	10161000
yes	dust cover bolts	10152500
yes	dust cover hold screw	10152000

Recommended SKINTOP® assumes minimal OD variance. Additional configurations are available; please see our SKINTOP® section.  
If not otherwise specified, all values relating to the product are nominal values.  
Photographs are not to scale and are not true representations of the products in question.

EPIC® ULTRA series



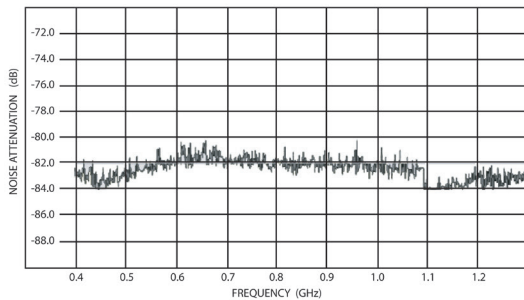
EPIC® ULTRA HB housings have a hard, electrically conductive, and corrosion-resistant nickel finish. Latching levers and bolts are stainless steel for strength and corrosion resistance. An integrated SKINTOP® gland in the hoods and surface mount bases provides a self-centering radial seal and strain relief. For electrically noisy environments where shielded cable is used, a SKINTOP® BRUSH insert provides a 360° low-resistance contact area with the cable shield. This configuration forms a conductive shell around the wire terminations that virtually eliminates electrical interference.

ULTRA housing	EPIC® insert series											
	HBE	HA	HQ	STA	HEE	HBS	HBVE	HD	HDD	MH	MC	Power K
HA 3/4	—	HA 3, HA 4	HQ 5, HQ 12	STA 6	—	—	—	HD 7, HD 8	—	—	—	—
HB 6	HBE 6	—	—	—	HEE 10	—	—	—	HDD 24	MH 6	MC 2	—
HB 10	HBE 10	—	—	—	HEE 18	—	HBVE 3	—	HDD 42	MH 10	MC 3	—
HB 16	HBE 16	—	—	—	HEE 32	HBS 6	HBVE 6	HD 40	HDD 72	MH 16	MC 5	4/0, 4/2
HB 24	HBE 24	—	—	—	HEE 46	—	HBVE 10	HD 64	HDD 108	MH 24	MC 7	4/8

Technical data

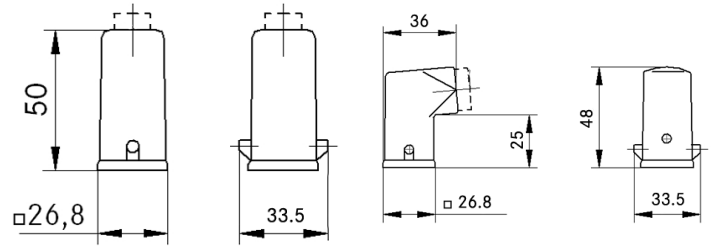
<p> <b>Specifications:</b> DIN EN 60529 DIN EN 6988</p> <p> <b>Protection class:</b> UL 50E Type 4, 4X, 12 IP65</p> <p> <b>Temperature range:</b> -40°C to +100°C</p>	<p> <b>Material:</b></p> <ul style="list-style-type: none"> <li>- housing: nickel-plated die-cast zinc</li> <li>- lever &amp; bolts: stainless steel</li> <li>- sealing: NBR</li> <li>- gland cap nut: nickel-plated brass</li> <li>- gland insert: PA thermoplastic</li> <li>- gland seal: special chloroprene elastomer</li> </ul>
---	--

EPIC ULTRA HB HOUSINGS w/BRUSH



## EPIC® ULTRA HA 3/4 hood

Hood with single lever bolts



all dimensions are in mm

### Technical data

**IP Protection class:** UL 50E Type 4, 4X, 12  
IP65

### Approvals

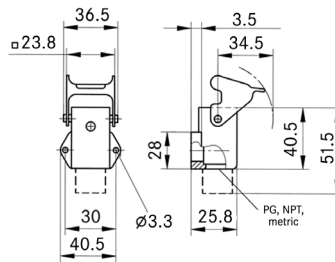
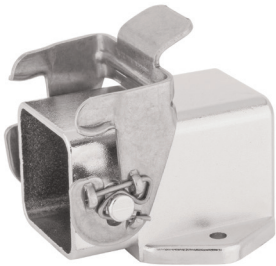


### metric

Size	Part number		SKINTOP® MS-M
	top entry	side entry	
M20	10423300	10423201	53112020

## EPIC® ULTRA HA 3/4 surface mount base

Surface mount with single lever



all dimensions are in mm

### Technical data

**IP Protection class:** UL 50E Type 4, 4X, 12  
IP65

### Approvals



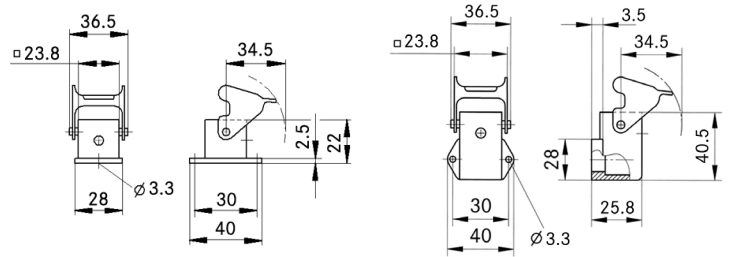
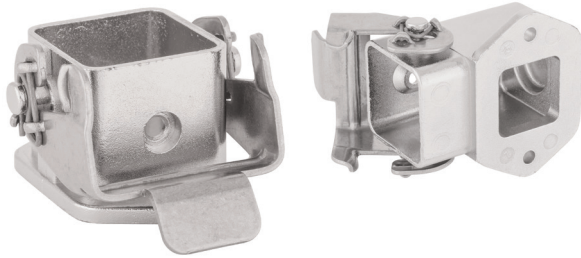
### metric

Size	Part number
M20	10423203

If not otherwise specified, all values relating to the product are nominal values.  
Photographs are not to scale and are not true representations of the products in question.

# EPIC® ULTRA HA 3/4 panel mount base

Panel mount base with single lever



all dimensions are in mm

### Technical data

**IP Protection class:** UL 50E Type 4, 4X, 12  
IP65

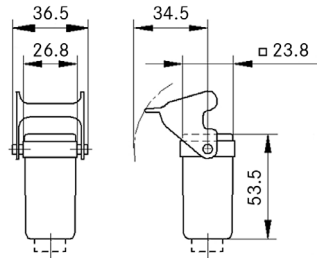
### Approvals



Description	Part number
standard	10423200
right angle	10423202

# EPIC® HA 3/4 cable coupler hood

Cable coupler with single lever



all dimensions are in mm

### Technical data

**IP Protection class:** UL 50E Type 4, 4X, 12  
IP65

### Approvals



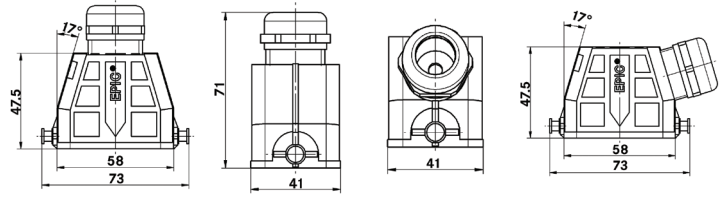
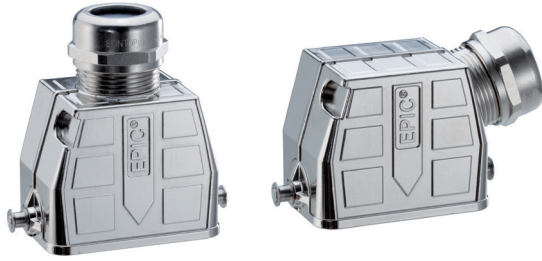
### metric

Size	Part number	SKINTOP® MS-M
M20	10423204	53112020

If not otherwise specified, all values relating to the product are nominal values. Photographs are not to scale and are not true representations of the products in question.

## EPIC® ULTRA HB 6 hood

Hood with single lever bolts



all dimensions are in mm

### Technical data

**IP Protection class:** UL 50E Type 4, 4X, 12  
IP65

### Complete the installation

 ULTRA HB covers  
page <?>

### Approvals

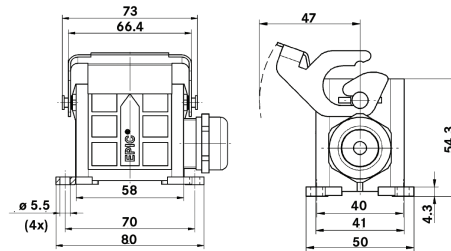


Part number	Brush included	Cable OD mm	Min. OD for braided shield mm
<b>Top entry</b>			
70250200	no	6 - 13	—
70250201	no	9 - 17	—
70250202	yes	9 - 17	6
<b>Side entry</b>			
70250203	no	6 - 13	—
70250204	no	9 - 17	—
70250205	yes	9 - 17	6

not for use with inserts requiring high profile housing

## EPIC® ULTRA HB 6 surface mount base

Surface mount base with single lever



all dimensions are in mm

### Technical data

**IP Protection class:** UL 50E Type 4, 4X, 12  
IP65

### Complete the installation

 ULTRA HB covers  
page <?>

### Approvals



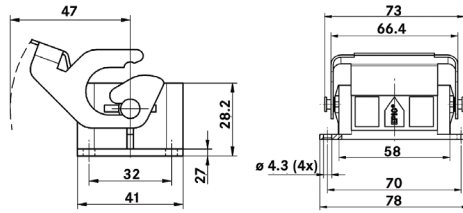
Part number	Brush included	Cable OD mm	Min. OD for braided shield mm
70250207	no	6 - 13	—
70250208	no	9 - 17	—
70250209	yes	9 - 17	6

not for use with inserts requiring high profile housing

If not otherwise specified, all values relating to the product are nominal values.  
Photographs are not to scale and are not true representations of the products in question.

# EPIC® ULTRA HB 6 panel mount base

Panel mount base with single lever



all dimensions are in mm

## Technical data

**IP Protection class:** UL 50E Type 4, 4X, 12  
IP65

## Complete the installation



ULTRA HB covers  
page <?>

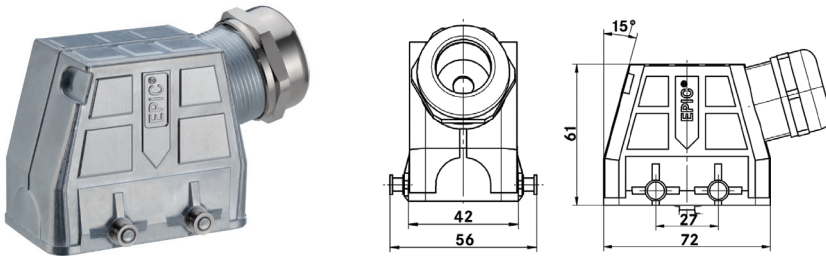
## Approvals



Dust cover included	Part number
no	70250206

## EPIC® ULTRA HB 10 hood

Hood with double lever bolts



all dimensions are in mm

**Technical data**

**IP Protection class:** UL 50E Type 4, 4X, 12 IP65

**Complete the installation**

 ULTRA HB covers page <?>

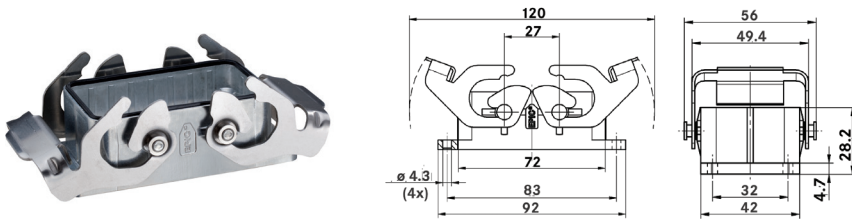
**Approvals**



Part number	Brush included	Cable OD mm	Min. OD for braided shield mm
<b>Side entry</b>			
70250210	no	6 - 13	—
70250211	no	9 - 17	—
70250212	yes	9 - 17	6

## EPIC® ULTRA HB 10 panel mount base

Panel mount base with double levers




all dimensions are in mm

**Technical data**

**IP Protection class:** UL 50E Type 4, 4X, 12 IP65

**Complete the installation**

 ULTRA HB covers page <?>

**Approvals**

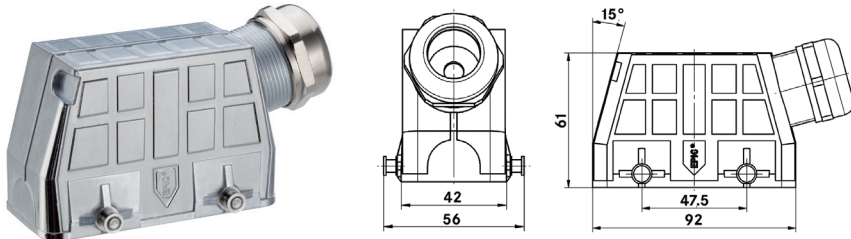


Dust cover included	Part number
no	70250213

If not otherwise specified, all values relating to the product are nominal values. Photographs are not to scale and are not true representations of the products in question.

# EPIC® ULTRA HB 16 hood

Hood with double lever bolts



all dimensions are in mm

**Technical data**

**IP Protection class:** UL 50E Type 4, 4X, 12 IP65

**Complete the installation**

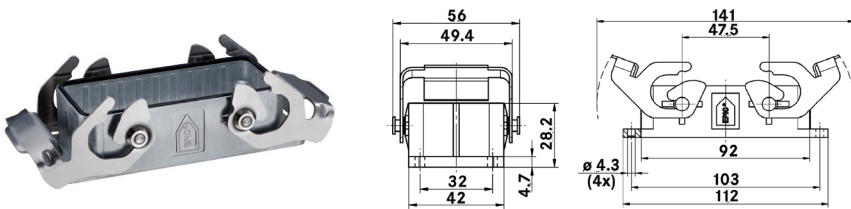
ULTRA HB covers page <?>

**Approvals**

Part number	Brush included	Cable OD mm	Min. OD for braided shield mm
<b>Side entry</b>			
70250214	no	7 - 15	—
70250215	no	11 - 21	—
70250216	yes	11 - 21	8

# EPIC® ULTRA HB 16 panel mount base

Panel mount base with double levers



all dimensions are in mm

**Technical data**

**IP Protection class:** UL 50E Type 4, 4X, 12 IP65

**Complete the installation**

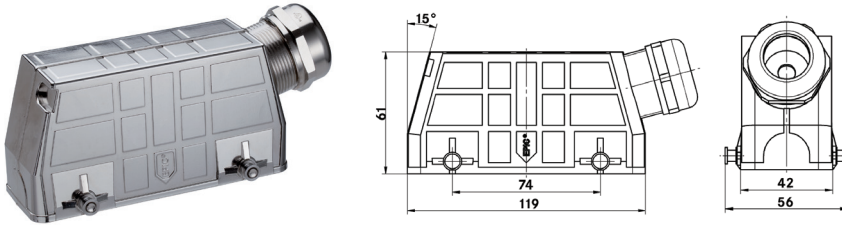
ULTRA HB covers page <?>

**Approvals**

Dust cover included	Part number
no	70250217

## EPIC® ULTRA HB 24 hood

Hood with double lever bolts



all dimensions are in mm

**Technical data**

**IP Protection class:** UL 50E Type 12  
IP65

**Complete the installation**

 ULTRA HB covers  
page <?>

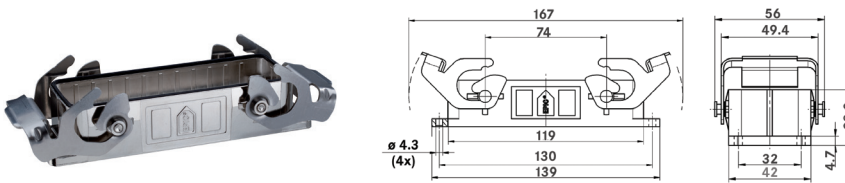
**Approvals**



Part number	Brush included	Cable OD mm	Min. OD for braided shield mm
<b>Side entry</b>			
70250219	no	7 - 15	—
70250220	no	11 - 21	—
70250221	yes	11 - 21	8

## EPIC® ULTRA HB 24 panel mount base

Panel mount base with double levers



all dimensions are in mm

**Technical data**

**IP Protection class:** UL 50E Type 12  
IP65

**Complete the installation**

 ULTRA HB covers  
page <?>

**Approvals**



Dust cover included	Part number
no	70250222

If not otherwise specified, all values relating to the product are nominal values.  
Photographs are not to scale and are not true representations of the products in question.

## EPIC® HA series



EPIC® HA rectangular connectors comply with all applicable requirements of Underwriters Laboratory (UL) Standards 1977 and 498, VDE Standard 0110 for creepage and clearance distances, and VDE Standard 0627 for the connector design.

The recognized UL file number and Canadian Standards Association (CSA) for EPIC® connectors are UL #E75770 and CSA #LR53004-1.

EPIC® connectors meet IP65, UL 50E, and NEMA standards only when in the mated condition.

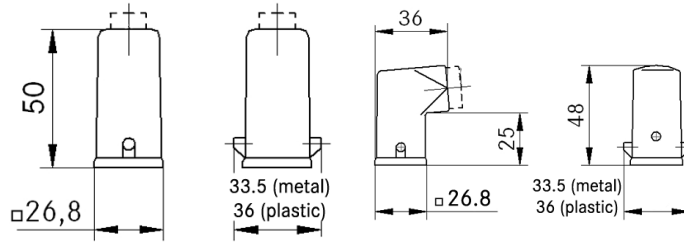
HA housing	EPIC® insert series			
	HA	HQ	STA	HD
HA 3/4	HA 3, HA 4	HQ 5, HQ 12	STA 6	HD 7, HD 8
HA 10	HA 10	—	STA 14	HD 15
HA 16	HA 16	—	STA 20	HD 25
HA 32	HA 32	—	STA 40	HD 50
HA 48	HA 48	—	—	—
HA 64	HA 64	—	—	—

### Technical data

<b>Specifications:</b> - metric housing:	DIN 43652	<b>Material:</b> - EPIC® HA 3/4: - metal: powder-coated die-cast zinc - plastic: thermoplastic flame-retardant material rated UL 94 V-0
	DIN 50262	
<b>Protection class:</b>	UL 50E Type 4, 12	- EPIC® HA 10-64: powder-coated aluminum alloy with zinc-plated steel locking levers and bolts
	IP65	
<b>Temperature range:</b>	-40°C to +125°C	

## EPIC® HA 3/4 hood

Hood with single lever bolts



all dimensions are in mm

**Complete the installation**



HA dust covers  
page <?>



Replacement  
gland kits  
page <?>

**Technical data**

**IP Protection class:** UL 50E Type 4, 12  
IP65

**Approvals**



**PG**

Size	Material	Part number	
		with gland	without gland
<b>Top entry</b>			
PG 11	die-cast zinc	10426500	10512100
PG 11	black plastic	10426700	10425500
PG 11	gray plastic	10426400	10426000
<b>Side entry</b>			
PG 11	die-cast zinc	10427500	10512300
PG 11	black plastic	10620600	10427300
PG 11	gray plastic	10427100	10427000

**NPT**

Size	Material	Part number without gland
<b>Top entry</b>		
1/2"	die-cast zinc	105121NP
1/2"	black plastic	104255NP
1/2"	gray plastic	104260NP
<b>Side entry</b>		
1/2"	die-cast zinc	105123NP
1/2"	black plastic	104273NP
1/2"	gray plastic	104270NP

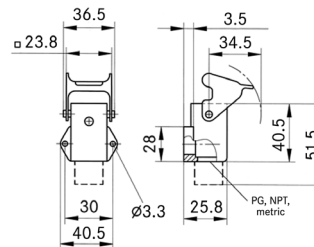
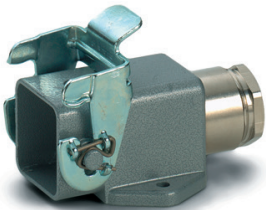
NPT hood provided with NPT fitting

**metric**

Size	Material	Part number	
		with gland	without gland
<b>Top entry</b>			
M20	die-cast zinc	19426500	19512100
M20	black plastic	—	19425500
M20	gray plastic	—	19426000
<b>Side entry</b>			
M20	die-cast zinc	19427500	19512300
M20	black plastic	—	19427300
M20	gray plastic	—	19427000

## EPIC® HA 3/4 surface mount base

Surface mount base with single lever



all dimensions are in mm

**Complete the installation**



HA dust covers  
page <?>



Replacement  
gland kits  
page <?>

**Technical data**

**IP Protection class:** UL 50E Type 4, 12  
IP65

**Approvals**



**PG**

Size	Material	Part number	
		with gland	without gland
PG 11	die-cast zinc	10424500	10512700
PG 11	gray plastic	10424200	10424000

**NPT**

Size	Material	Part number without gland
1/2"	die-cast zinc	105127NP
1/2"	gray plastic	104240NP

NPT base provided with NPT fitting

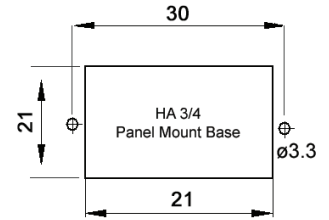
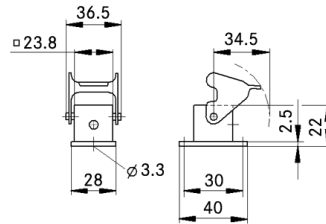
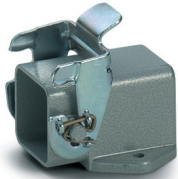
**metric**

Size	Material	Part number	
		with gland	without gland
M20	die-cast zinc	19424500	19512700
M20	gray plastic	19421900	—

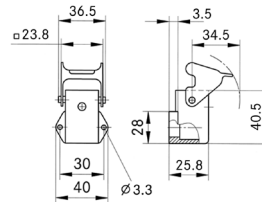
If not otherwise specified, all values relating to the product are nominal values.  
Photographs are not to scale and are not true representations of the products in question.

# EPIC® HA 3/4 panel mount base

## Panel mount base with single lever



all dimensions are in mm



### Technical data

**IP Protection class:** UL 50E Type 4, 12  
IP65

### Complete the installation



HA dust covers  
page <?>

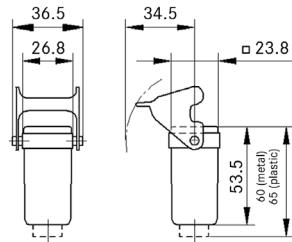
### Approvals



Description	Dust cover included	Part number		
		die-cast zinc	black plastic	gray plastic
standard base	no	10422500	10422200	10422000
standard base	yes	44429015	—	—
right-angle base	no	10423500	10423100	10423000

# EPIC® HA 3/4 cable coupler hood

## Cable coupler with single lever



all dimensions are in mm

### Complete the installation



HA dust covers  
page <?>



Replacement  
gland kits  
page <?>

### Technical data

**IP Protection class:** UL 50E Type 4, 12  
IP65

### Approvals



### PG

Size	Material	Part number	
		with gland	without gland
PG 11	die-cast zinc	10429500	10512900
PG 11	black plastic	10620300	10429200
PG 11	gray plastic	10429100	10429000

### NPT

Size	Material	Part number without gland
1/2"	die-cast zinc	105129NP
1/2"	black plastic	104292NP
1/2"	gray plastic	104290NP

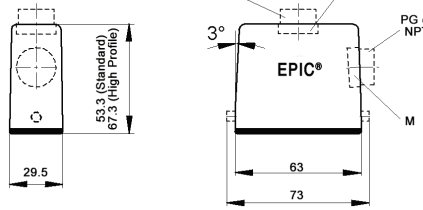
NPT coupler provided with NPT fitting

### metric

Size	Material	Part number without gland
M20	die-cast zinc	19512900
M20	black plastic	19429200
M20	gray plastic	19429000

## EPIC® HA 10 standard & high profile hood

Hood with single lever bolts



all dimensions are in mm

**Technical data**

**IP Protection class:** UL 50E Type 4, 12 IP65

**Complete the installation**

HA dust covers page <?>

**Approvals**

UL US RoHS DVE

**PG**

size	PG hood part number	Profile	SKINTOP® gland	
			plastic	metal
<b>Top entry</b>				
13	10446000	std	53015030	52015730
16	10446100	std	53015040	52015740
16	70460200	high	53015040	52015740
21	70460400	high	53015040	52015750
<b>Side entry</b>				
16	10445000	std	53015040	52015740
16	70462200	high	53015040	52015740
21	10445500	std	53015050	52015750
21	70462400	high	53015050	52015750

**NPT**

size	NPT hood part number	Profile	SKINTOP® gland	
			plastic	metal
<b>Top entry</b>				
1/2"	104460NP	std	S1112	53112024
1/2"	704602NP	high	S1112	53112024
1/2"	104461NP	std	S1134	53112024
3/4"	704604NP	high	S1134	53112034
<b>Side entry</b>				
1/2"	104450NP	std	S1112	53112024
1/2"	704622NP	high	S1112	53112024
3/4"	104455NP	std	S1134	53112034
3/4"	704624NP	high	S1134	53112034

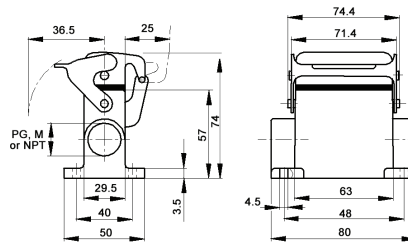
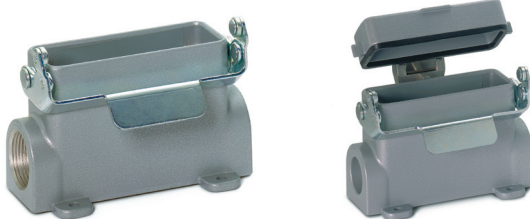
**metric**

size	Metric hood* part number	Profile	SKINTOP® gland	
			plastic	metal
<b>Top entry</b>				
20	19446000	std	53111020	53112020
20	79460200	high	53111020	53112020
25	19446100	std	53111030	53112030
25	79460400	high	53111030	53112030
<b>Side entry</b>				
20	19445000	std	53111020	53112020
20	79462200	high	53111020	53112020
25	19445500	std	53111030	53112030
25	79462400	high	53111030	53112030

\* Top-entry and high profile hoods do not come with a neck

## EPIC® HA 10 surface mount base

Surface mount base with single lever



all dimensions are in mm

**Technical data**

**IP Protection class:** UL 50E Type 4, 12 IP65

**Complete the installation**

HA dust covers page <?>

**Approvals**

UL US RoHS DVE

**PG**

size	PG base part number	Dust cover	SKINTOP® gland	
			plastic	metal
<b>One entry</b>				
16	104481	no	53015040	52015740
16	704552	yes	53015040	52015740
21	104480	no	53015050	52015750
21	704554	yes	53015050	52015750
<b>Two entries</b>				
16	104501	no	53015040	52015740
16	704562	yes	53015040	52015740
21	104500	no	53015050	52015750
21	704564	yes	53015050	52015750

**NPT**

size	NPT base part number	Dust cover	SKINTOP® gland	
			plastic	metal
<b>One entry</b>				
1/2"	104481NP	no	S1112	53112024
1/2"	704552NP	yes	S1112	53112024
3/4"	104480NP	no	S1134	53112034
3/4"	704554NP	yes	S1134	53112034
<b>Two entries</b>				
1/2"	104501NP	no	S1112	53112024
1/2"	704562NP	yes	S1112	53112024
3/4"	104500NP	no	S1134	53112034
3/4"	704564NP	yes	S1134	53112034

**metric**

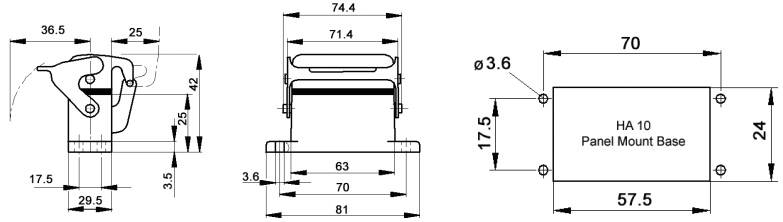
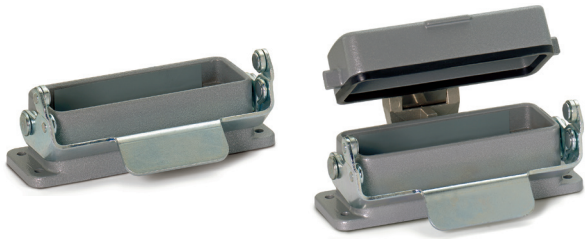
size	Metric base part number	Dust cover	SKINTOP® gland	
			plastic	metal
<b>One entry</b>				
20	19448100	no	53111020	53112020
20	79455200	yes	53111020	53112020
25	19448000	no	53111030	53112030
25	79455400	yes	53111030	53112030
<b>Two entries</b>				
20	19450100	no	53111020	53112020
20	79456200	yes	53111020	53112020
25	19450000	no	53111030	53112030
25	79456400	yes	53111030	53112030

NPT base provided with NPT fitting

If not otherwise specified, all values relating to the product are nominal values. Photographs are not to scale and are not true representations of the products in question.

# EPIC® HA 10 panel mount base

## Panel mount base with single lever



all dimensions are in mm

### Technical data

**IP Protection class:** UL 50E Type 4, 12  
IP65

### Complete the installation

HA dust covers  
page <?>

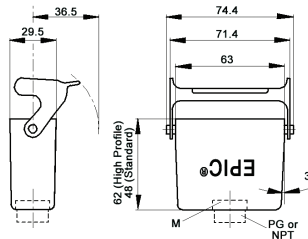
### Approvals



Dust cover included	Part number
no	104420C0
yes	704440C0

# EPIC® HA 10 cable coupler hood

## Standard & high profile cable coupler with single lever



all dimensions are in mm

### Technical data

**IP Protection class:** UL 50E Type 4, 12  
IP65

### Complete the installation

HA dust covers  
page <?>

### Approvals



### PG

PG coupler		SKINTOP® gland	
size	part number	plastic	metal
<b>Standard profile</b>			
PG 13	104390	53015030	52015730
PG 16	704500	53015040	52015740
<b>High profile</b>			
PG 21	704504	53015050	52015750

### NPT

NPT coupler		SKINTOP® gland	
size	part number	plastic	metal
<b>Standard profile</b>			
1/2"	104390NP	S 1112	53112024
1/2"	704500NP	S 1112	53112024
<b>High profile</b>			
3/4"	704504NP	S 1134	53112034

NPT coupler provided with NPT fitting

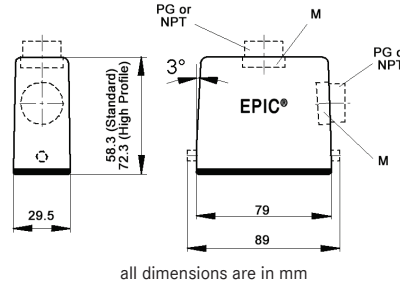
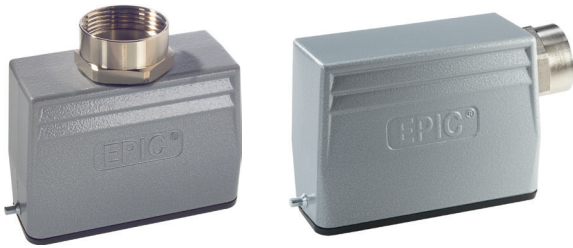
### metric

Metric coupler*		SKINTOP® gland	
size	part number	plastic	metal
<b>Standard profile</b>			
M20	19439000	53111020	53112020
M25	79450000	53111030	53112030
<b>High profile</b>			
M25	79450400	53111030	53112030

\* Metric couplers do not come with a neck

## EPIC® HA 16 standard & high profile hood

Hood with single lever bolts



Technical data	
<b>IP Protection class:</b>	UL 50E Type 4, 12 IP65

**Complete the installation**

HA dust covers page <?>

**Approvals**

**PG**

size	PG hood part number	Profile	SKINTOP® gland	
			plastic	metal
<b>Top entry</b>				
16	10565000	std	53015040	52015740
16	70490200	high	53015040	52015740
21	10565200	std	53015050	52015750
21	70490400	high	53015050	52015750
<b>Side entry</b>				
16	10564000	std	53015040	52015740
16	70492200	high	53015040	52015740
21	10564500	std	53015050	52015750
21	70492400	high	53015050	52015750

**NPT**

size	NPT hood part number	Profile	SKINTOP® gland	
			plastic	metal
<b>Top entry</b>				
1/2"	105650NP	std	S1112	53112024
1/2"	704902NP	high	S1112	53112024
3/4"	105652NP	std	S1134	53112034
3/4"	704904NP	high	S1134	53112034
<b>Side entry</b>				
1/2"	105640NP	std	S1112	53112024
1/2"	704922NP	high	S1112	53112024
3/4"	105645NP	std	S1134	53112034
3/4"	704924NP	high	S1134	53112034

**metric**

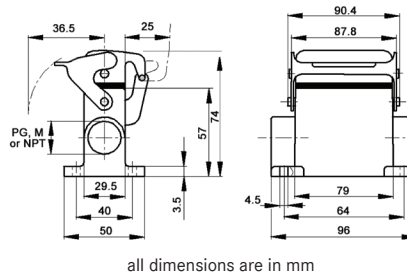
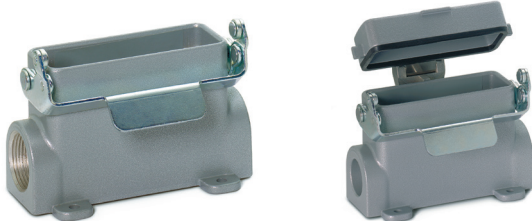
size	Metric hood* part number	Profile	SKINTOP® gland	
			plastic	metal
<b>Top entry</b>				
20	19565000	std	53111020	53112020
20	79490200	high	53111020	53112020
25	19565300	std	53111030	53112030
25	79490400	high	53111030	53112030
<b>Side entry</b>				
20	19564000	std	53111020	53112020
20	79492200	high	53111020	53112020
25	19564500	std	53111030	53112030
25	79492400	high	53111030	53112030

NPT hood provided with NPT fitting

\* Top-entry and high profile hoods do not come with a neck

## EPIC® HA 16 surface mount base

Surface mount with single lever



Technical data	
<b>IP Protection class:</b>	UL 50E Type 4, 12 IP65

**Complete the installation**

HA dust covers page <?>

**Approvals**

**PG**

size	PG base part number	Dust cover	SKINTOP® gland	
			plastic	metal
<b>One entry</b>				
16	105671	no	53015040	52015740
16	704852	yes	53015040	52015740
21	105670	no	53015050	52015750
21	704854	yes	53015050	52015750
<b>Two entries</b>				
16	704862	yes	53015040	52015740
21	105680	no	53015050	52015750

**NPT**

size	NPT base part number	Dust cover	SKINTOP® gland	
			plastic	metal
<b>One entry</b>				
1/2"	105671NP	no	S1112	53112024
1/2"	704852NP	yes	S1112	53112024
3/4"	105670NP	no	S1134	53112034
3/4"	704854NP	yes	S1134	53112034
<b>Two entries</b>				
1/2"	704862NP	yes	S1112	53112024
3/4"	105680NP	no	S1134	53112034

**metric**

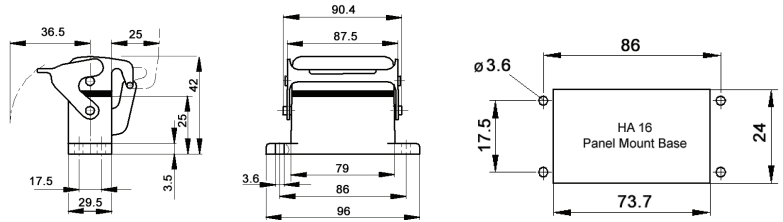
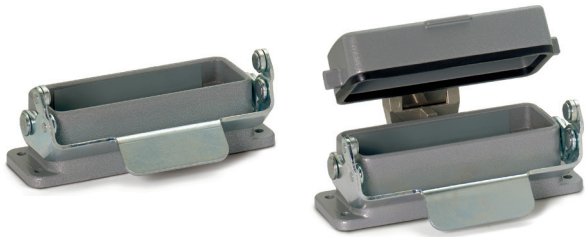
size	Metric base part number	Dust cover	SKINTOP® gland	
			plastic	metal
<b>One entry</b>				
20	19567100	no	53111020	53112020
20	79485200	yes	53111020	53112020
25	19567000	no	53111030	53112030
25	79485400	yes	53111030	53112030
<b>Two entries</b>				
25	19568000	no	53111030	53112030
25	79486400	yes	53111030	53112030

NPT base provided with NPT fitting

If not otherwise specified, all values relating to the product are nominal values. Photographs are not to scale and are not true representations of the products in question.

# EPIC® HA 16 panel mount base

## Panel mount base with single lever



all dimensions are in mm

### Technical data

**IP Protection class:** UL 50E Type 4, 12  
IP65

### Complete the installation

HA dust covers  
page <?>

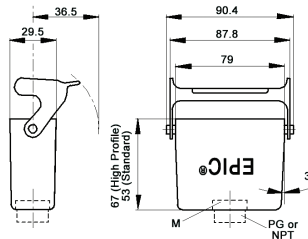
### Approvals



Dust cover included	Part number
no	104620C0
yes	704740C0

# EPIC® HA 16 cable coupler hood

## Cable coupler with single lever



all dimensions are in mm

### Technical data

**IP Protection class:** UL 50E Type 4, 12  
IP65

### Complete the installation

HA dust covers  
page <?>

### Approvals



### PG

PG coupler		SKINTOP® gland	
size	part number	plastic	metal
<b>Standard profile</b>			
PG 16	105630	53015040	52015740
<b>High profile</b>			
PG 16	704802	53015040	52015740
PG 21	704804	53015050	52015750

### NPT

NPT coupler		SKINTOP® gland	
size	part number	plastic	metal
<b>Standard profile</b>			
1/2"	105630NP	S 1112	53112024
<b>High profile</b>			
1/2"	704802NP	S 1112	53112024
3/4"	704804NP	S 1134	53112034

NPT coupler provided with NPT fitting

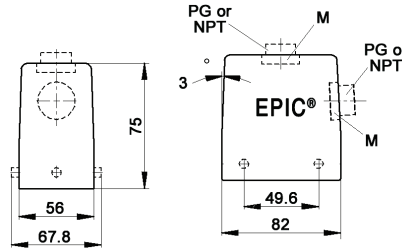
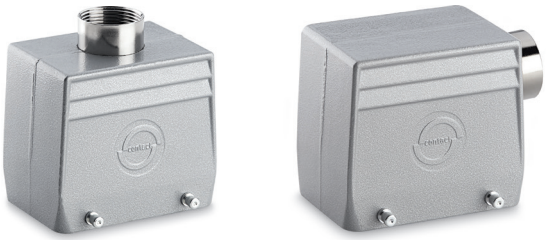
### metric

Metric coupler*		SKINTOP® gland	
size	part number	plastic	metal
<b>Standard profile</b>			
M20	19563000	53111020	53112020
M25	19563200	53111030	53112030
<b>High profile</b>			
M20	79480200	53111030	53112030
M25	79480400	53111030	53112030

\* Metric couplers do not come with a neck

## EPIC® HA 32 standard hood

Hood with double lever bolts



all dimensions are in mm

**Technical data**

**IP Protection class:** NEMA 4, NEMA 12  
IP65

**Complete the installation**

HA dust covers  
page <?>

**Approvals**

UL US RoHS VDE

**PG**

PG hood		SKINTOP® gland	
size	part number	plastic	metal
<b>Top entry</b>			
PG 21	10582000	53015050	52015750
PG 29	10583000	53015060	52015760
<b>Side entry</b>			
PG 21	10576000	53015050	52015750
PG 29	10577000	53015060	52015760

**NPT**

NPT hood		SKINTOP® gland	
size	part number	plastic	metal
<b>Top entry</b>			
¾"	105820NP	S1134	53112034
1"	105830NP	S1101	53112044
<b>Side entry</b>			
¾"	105760NP	S1134	53112034
1"	105770NP	S1101	53112044

NPT hood provided with NPT fitting

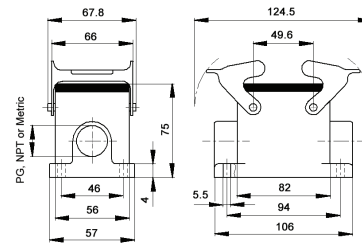
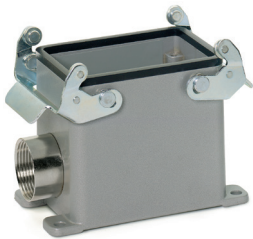
**metric**

Metric hood*		SKINTOP® gland	
size	part number	plastic	metal
<b>Top entry</b>			
M25	19582000	53111030	53112030
M32	19583000	53111040	53112040
M40	79520600	53111050	53112050
<b>Side entry</b>			
M25	19576000	53111030	53112030
M32	19577000	53111040	53112040
M40	19577500	53111050	53112050

\* Metric hoods do not come with a neck

## EPIC® HA 32 surface mount base

Surface mount base with double levers



all dimensions are in mm

**Technical data**

**IP Protection class:** NEMA 4, NEMA 12  
IP65

**Complete the installation**

HA dust covers  
page <?>

**Approvals**

UL US RoHS VDE

**PG**

PG base		SKINTOP® gland	
size	part number	plastic	metal
<b>One entry</b>			
PG 21	104740	53015050	52015750
PG 29	104741	53015060	52015760
<b>Two entries</b>			
PG 21	104820	53015050	52015750
PG 29	104821	53015060	52015760

**NPT**

NPT base		SKINTOP® gland	
size	part number	plastic	metal
<b>One entry</b>			
¾"	104740NP	S1134	53112034
1"	104741NP	S1101	53112044
<b>Two entries</b>			
¾"	104820NP	S1134	53112034
1"	104821NP	S1101	53112044

NPT base provided with NPT fitting

**metric**

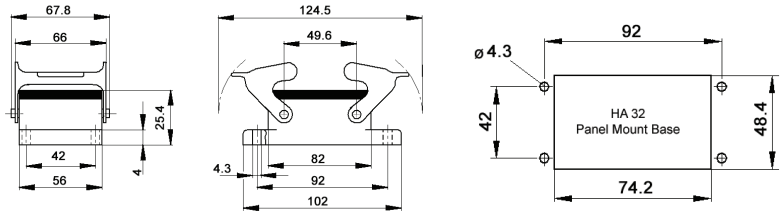
Metric base*		SKINTOP® gland	
size	part number	plastic	metal
<b>One entry</b>			
M25	19474000	53111030	53112030
M32	19474100	53111040	53112040
<b>Two entries</b>			
M25	19482000	53111030	53112030
M32	19482100	53111040	53112040
M40	79506800	53111050	53112050

\* Metric bases do not come with a neck

If not otherwise specified, all values relating to the product are nominal values. Photographs are not to scale and are not true representations of the products in question.

## EPIC® HA 32 panel mount base

Panel mount base with double levers



all dimensions are in mm

### Technical data

**IP Protection class:** NEMA 4, NEMA 12  
IP65

### Complete the installation



HA dust covers  
page <?>

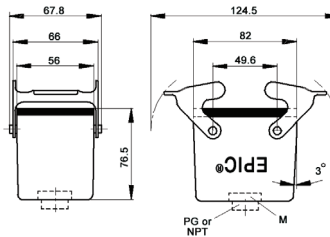
### Approvals



Dust cover included	Part number
no	104720C0

## EPIC® HA 32 cable coupler hoods

Cable coupler with double levers



all dimensions are in mm

### Technical data

**IP Protection class:** NEMA 4, NEMA 12  
IP65

### Complete the installation



HA dust covers  
page <?>

### Approvals



### PG

PG coupler		SKINTOP® gland	
size	part number	plastic	metal
<b>Standard profile</b>			
PG 21	105880	53015050	52015750
PG 29	105885	53015060	52015760

### NPT

NPT coupler		SKINTOP® gland	
size	part number	plastic	metal
<b>Standard profile</b>			
¾"	105880NP	S 1134	53112034
1"	105885NP	S 1101	53112044

NPT coupler provided with NPT fitting

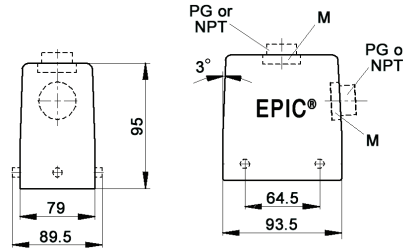
### metric

Metric coupler*		SKINTOP® gland	
size	part number	plastic	metal
<b>Standard profile</b>			
M25	19588000	53111030	53112030
M32	19588500	53112030	53112040

\* Metric couplers do not come with a neck

## EPIC® HA 48 standard hood

Hood with double lever bolts



all dimensions are in mm

**Technical data**

**IP Protection class:** NEMA 4, NEMA 12  
IP65

**Complete the installation**

HA dust covers page <?>

**Approvals**

**PG**

PG hood		SKINTOP® gland	
size	part number	plastic	metal
<b>Top entry</b>			
PG 29	10631800	53015060	52015760
<b>Side entry</b>			
PG 29	10630800	53015060	52015760

**NPT**

NPT hood		SKINTOP® gland	
size	part number	plastic	metal
<b>Top entry</b>			
1"	106318NP	S1101	53112044
<b>Side entry</b>			
1"	106308NP	S1101	53112044

NPT hood provided with NPT fitting

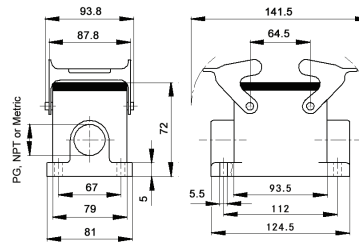
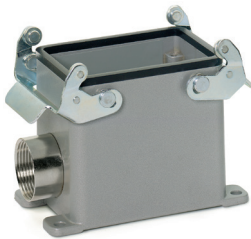
**metric**

Metric hood*		SKINTOP® gland	
size	part number	plastic	metal
<b>Top entry</b>			
M32	19631800	53111040	53112040
M40	19636600	53111050	53112050
<b>Side entry</b>			
M32	19630800	53111040	53112040
M40	19635600	53111050	53112050

\* Metric hoods do not come with a neck

## EPIC® HA 48 surface mount base

Surface mount base with double levers



all dimensions are in mm

**Technical data**

**IP Protection class:** NEMA 4, NEMA 12  
IP65

**Complete the installation**

HA dust covers page <?>

**Approvals**

**PG**

PG base		SKINTOP® gland	
size	part number	plastic	metal
<b>One entry</b>			
PG 29	106338	53015060	52015760

**NPT**

NPT base		SKINTOP® gland	
size	part number	plastic	metal
<b>One entry</b>			
1"	106338NP	S1101	53112044

NPT base provided with NPT fitting

**metric**

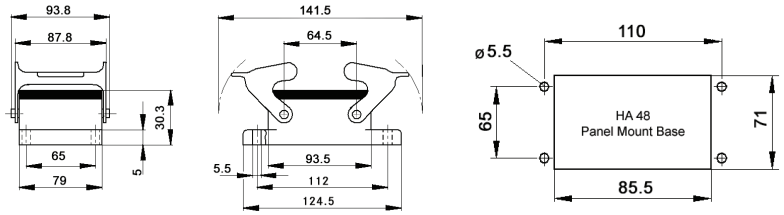
Metric base*		SKINTOP® gland	
size	part number	plastic	metal
<b>One entry</b>			
M32	19633800	53111040	53112040
M40	19638600	53111050	53112050
<b>Two entries</b>			
M40	19639600	53111050	53112050

\* Metric bases do not come with a neck

If not otherwise specified, all values relating to the product are nominal values. Photographs are not to scale and are not true representations of the products in question.

# EPIC® HA 48 panel mount base

Panel mount base with double levers



all dimensions are in mm

### Technical data

**IP Protection class:** NEMA 4, NEMA 12  
IP65

### Complete the installation



HA dust covers  
page <?>

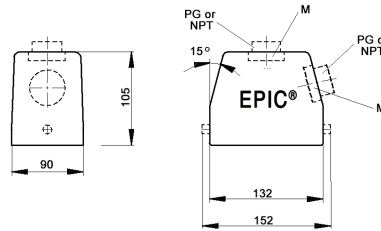
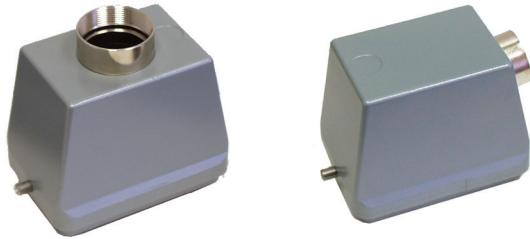
### Approvals



Dust cover included	Part number
no	106255C0

# EPIC® HA 64 standard hood

Hood with single lever bolts



all dimensions are in mm

### Technical data

**IP Protection class:** NEMA 4, NEMA 12  
IP65

### Complete the installation



HA dust covers  
page <?>

### Approvals



## PG

size	PG hood		SKINTOP® gland	
	size	part number	plastic	metal
<b>Top entry</b>				
PG 29		10155000	53015060	52015760
PG 36		10156000	53015070	52015765
PG 42		10157000	53015080	52015766
<b>Side entry</b>				
PG 29		10158000	53015060	52015760
PG 36		10159000	53015070	52015765
PG 42		10160000	53015080	52015766

## NPT

size	NPT hood		SKINTOP® gland	
	size	part number	plastic	metal
<b>Top entry</b>				
1"		101550NP-HA	S 1101	53112044
1 1/4"		101560NP-HA	—	53112054
<b>Side entry</b>				
1"		101580NP-HA	S 1101	53112044
1 1/4"		101590NP-HA	—	53112054

NPT hood provided with NPT fitting

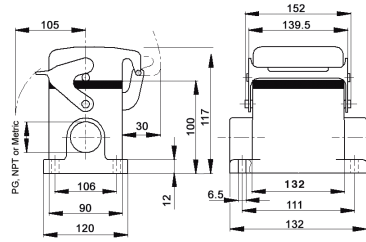
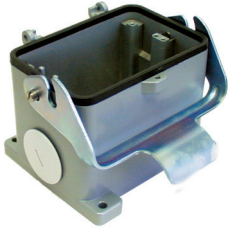
## metric

size	Metric hood*		SKINTOP® gland	
	size	part number	plastic	metal
<b>Top entry</b>				
M32		191550HA	53111040	53112040
M40		191560HA	53111050	53112050
M50		191570HA	53111060	53112060
<b>Side entry</b>				
M32		191580HA	53111040	53112040
M40		191590HA	53111050	53112050
M50		191600HA	53111060	53112060

\* Metric hoods do not come with a neck

# EPIC® HA 64 surface mount base

## Surface mount base with single lever



all dimensions are in mm

**Technical data**

**IP Protection class:** NEMA 4, NEMA 12  
IP65

**Complete the installation**

HA dust covers page <?>

**Approvals**

**PG**

PG base size	part number	Dust cover	SKINTOP® gland	
			plastic	metal
<b>One entry</b>				
29	101650HA	no	53015060	52015760
29	101670HA	yes	53015060	52015760
36	101651HA	no	53015070	52105765
36	101671HA	yes	53015070	52015765
<b>Two entries</b>				
29	101660HA	no	53015060	52015760
29	101680HA	yes	53015060	52015760
36	101661HA	no	53015070	52105765
36	101681HA	yes	53015070	52015765

**NPT**

NPT base size	part number	Dust cover	SKINTOP® gland	
			plastic	metal
<b>One entry</b>				
1"	101650NP-HA	no	S 1101	53112044
1"	101670NP-HA	yes	S 1101	53112044
1¼"	101651NP-HA	no	—	53112054
1¼"	101671NP-HA	yes	—	53112054
<b>Two entries</b>				
1"	101660NP-HA	no	S 1101	53112044
1"	101680NP-HA	yes	S 1101	53112044
1¼"	101661NP-HA	no	—	53112054
1¼"	101681NP-HA	yes	—	53112054

NPT base provided with NPT fitting

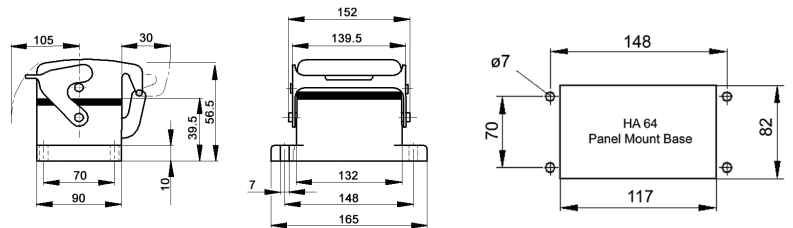
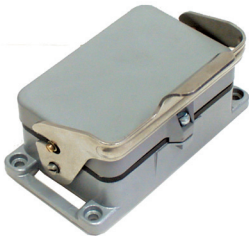
**metric**

Metric base* size	part number	Dust cover	SKINTOP® gland	
			plastic	metal
<b>One entry</b>				
32	191650HA	no	53111040	53112040
32	191670HA	yes	53111040	53112040
40	191651HA	no	53111050	53112050
40	191671HA	yes	53111050	53112050
<b>Two entries</b>				
32	191660HA	no	53111040	53112040
32	191680HA	yes	53111040	53112040
40	191661HA	no	53111050	53112050
40	191681HA	yes	53111050	53112050

\* Metric bases do not come with a neck

# EPIC® HA 64 panel mount base

## Panel mount base with single lever



all dimensions are in mm

**Technical data**

**IP Protection class:** NEMA 4, NEMA 12  
IP65

**Complete the installation**

HA dust covers page <?>

**Approvals**

Dust cover included	Hardware	Part number
no	—	101610HA
yes	dust cover bolts	101525HA
yes	dust cover bolts	101520HA

If not otherwise specified, all values relating to the product are nominal values. Photographs are not to scale and are not true representations of the products in question.